

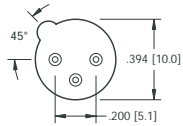
## SOCKETS FOR TO-5 & TO-100



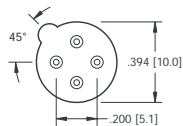
Fully molded compact construction. Speeds transistor assembly. Incorporates ultra high quality, closed entry, sleeve type contacts. Accepts .016 (.41) to .020 (.51) diameter leads or .010 (.25) x .018 (.46) rectangular transistor leads.

**MATERIAL:**  
**Insulator:** Glass Filled Polyester, UL Rated 94V-0  
**Contact Pin:** Brass, Tin Plate  
**Contact Spring:** Beryllium Copper, .000030 min. Gold Plate

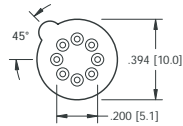
CAT. NO.	FOR	PINS
4590	TO-5	3
4591	TO-5	4
4592	TO-5	8
4593	TO-100	8
4594	TO-100	10



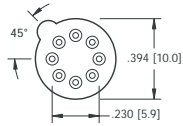
Cat. No. 4590



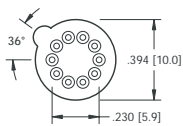
Cat. No. 4591



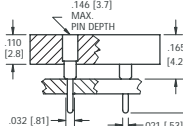
Cat. No. 4592



Cat. No. 4593



Cat. No. 4594

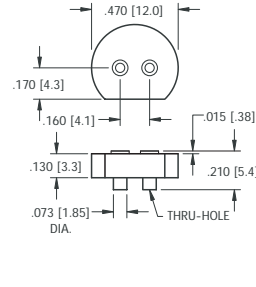
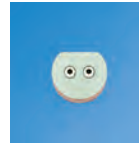


## "MINI" HALOGEN LAMP SOCKETS

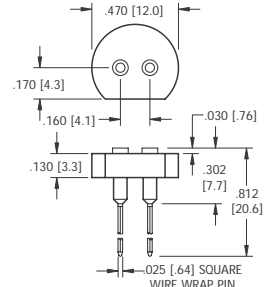
- Accepts .022 (.032) to .032 (.81) diameter Pins or Leads
- The Wire Wrap Pins can be easily bent to achieve a variety of positions

### SPECIFICATIONS

Base: Glass Filled LCP; Contact: Beryllium Copper, Gold Plate; Shell: Brass, Nickel Plate



CAT. NO. 4595



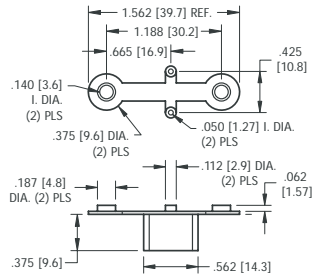
CAT. NO. 4596

## POWER TRANSISTOR MOUNTS

Molded barrier insulators functionally replaces up to six pieces of conventional insulation required with previous methods of mounting power transistors. Built-in barrier eliminates need for sleeving of connections.

NOTE: #6-20 mounting screw available CAT. NO. 4706

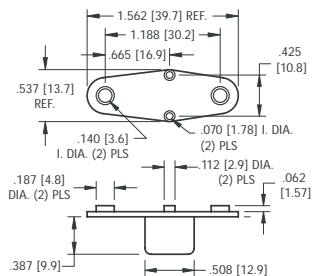
### For TO-3 CASES



**MATERIAL:** Nylon 6/6, UL Rated 94V-2

CAT. NO. 4616

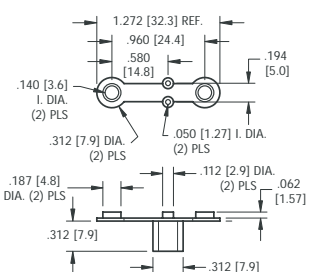
### HEAVY DUTY TO-3



**MATERIAL:** Glass filled Polyester, UL Rated 94V-0

CAT. NO. 4626

### For TO-66 CASES



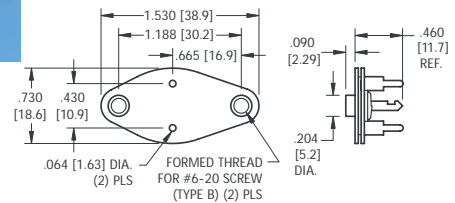
**MATERIAL:** Nylon 6/6, UL Rated 94V-2

CAT. NO. 4617

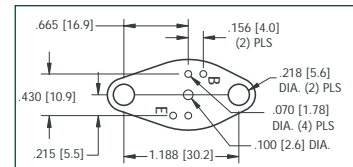
## TO-3 SOCKET FOR PC BOARDS



Easily assembles onto printed circuit board. Eliminates wiring. Stops on PC terminals provide sufficient spacing between socket and PC board to permit proper assembly of transistor to socket. Can be screwed down tightly to heat sink.



### Bottom View Mounting Detail



**MATERIAL:**

**Top Plate:** Molded Nylon

**Base:** Phenolic

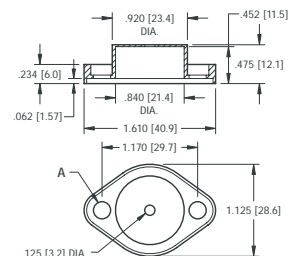
**Contacts:** Brass, Tin Plate

**Collector Plate:** Steel, Tin Plate

CAT. NO. 4600

## NYLON TO-3 CASE COVERS

Molded nylon covers easily mount over and insulate the power transistor. Will withstand temperatures to approximately 250°F (107°C).



**MATERIAL:** Nylon 6/6, UL Rated 94V-2

CAT. NO.	FOR	EYELETS INSTALLED	A
4632	TO-3	NONE	.210 (5.4)
4634	TO-3	TWO	.140 (3.6)



# TRANSISTOR INSULATORS

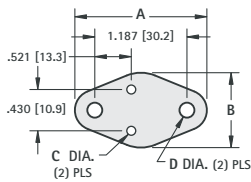
- Rapid Heat Dissipation • High Dielectric Strength • Low Cost

These precision stamped mica insulators provide good thermal conductivity: .009 watts per square inch per degree celsius per

inch in thickness. Excellent thermal resistance 1100°F. (593°C) Dielectric constant of 7 at 1000 KHz.

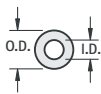
**MATERIAL:** .003 (.08) ± .001 (.02) thick Mica

## FOR TO-3 CASES



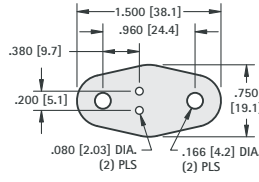
CAT. NO.	A	B	C	D
4651	1.625 (41.3)	1.093 (27.8)	.093 (2.36)	.166 (4.2)
4652	1.560 (39.6)	1.050 (26.7)	.203 (5.15)	.171 (4.4)
4653	1.655 (42.1)	1.063 (27.0)	.166 (4.2)	.166 (4.2)
4636	1.655 (42.1)	1.063 (27.0)	.052 (1.32)	.166 (4.2)
4644	1.655 (42.1)	1.063 (27.0)	.270 (6.9)	.166 (4.2)

## FOR THREADED STUD TRANSISTORS

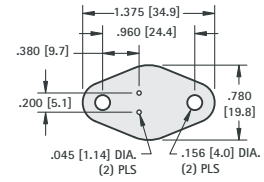


CAT. NO.	ID	OD	For Screw Size
4678	.120 (3.1)	.375 (9.5)	4
4679	.144 (3.7)	.375 (9.5)	6
4680	.171 (4.3)	.500 (12.7)	8
4681	.196 (5.0)	.625 (15.9)	10
4682	.260 (6.6)	.750 (19.0)	1/4
4683	.328 (8.3)	.875 (22.2)	5/16

## FOR TO-66 CASES

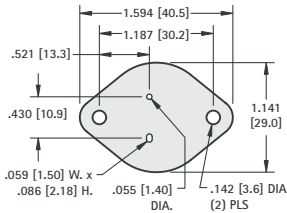


CAT. NO. 4664

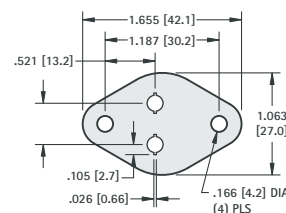


CAT. NO. 4666

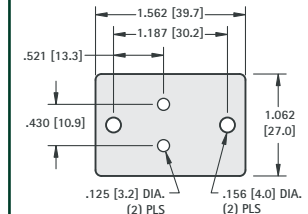
## FOR TO-3 CASES



CAT. NO. 4662

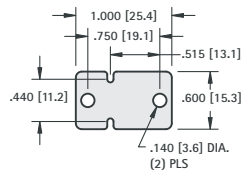


CAT. NO. 4667

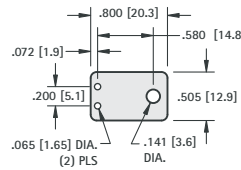


CAT. NO. 4661

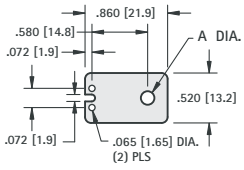
## FOR PLASTIC CASE



CAT. NO. 4663



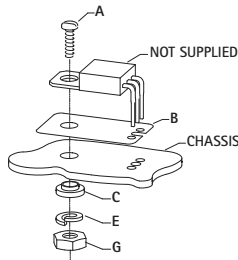
CAT. NO. 4671



CAT. NO.	A
4672	.141 (3.6)
4673	.115 (2.9)

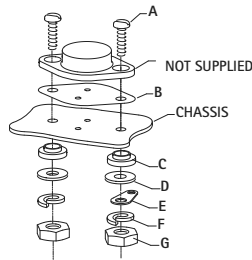
# TRANSISTOR MOUNTING KITS

- Complete Kits or Individual Hardware • Pre-Packaged • Uniform Hardware at Low Cost



## FOR TO-220 CASE

ITEM	CAT. NO.	DESCRIPTION	QTY.
A	4690	4-40 Screw	1
B	4672	Mica Insulator	1
C	3049	Shoulder Washer	1
E	4693	Lockwasher	1
G	4694	4-40 Nut	1

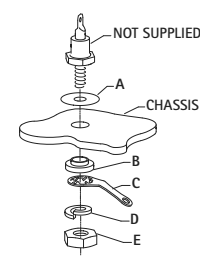


## FOR TO-3 CASE

ITEM	CAT. NO.	DESCRIPTION	QTY.
A	4696	6-32 Screw	2
B	4651	Mica Insulator	1
C	4698	Shoulder Washer	2
D	4699	Metal Washer	2
E	4004	Solder Terminal	1
F	4700	Lockwasher	2
G	4701	6-32 Nut	2

## FOR TO-66 CASE

ITEM	CAT. NO.	DESCRIPTION	QTY.
A	4696	6-32 Screw	2
B	4666	Mica Insulator	1
C	4698	Shoulder Washer	2
D	4699	Metal Washer	2
E	4004	Solder Terminal	1
F	4700	Lockwasher	2
G	4701	6-32 Nut	2



## FOR DO-4, TO-59, TO-60, TO-62 CASES

ITEM	CAT. NO.	DESCRIPTION	QTY.
A	4681	Mica Insulator	1
B	4702	Shoulder Washer	1
C	4704	Solder Terminal	1
D	1477	Lockwasher	1
E	4705	10-32 Nut	1

## FOR DO-5, TO-48, TO-61 CASES

ITEM	CAT. NO.	DESCRIPTION	QTY.
A	4682	Mica Insulator	1
B	4711	Shoulder Washer	1
C	4712	Solder Terminal	1
D	1476	Lockwasher	1
E	4713	1/4-28 Nut	1

These pre-packaged universal mounting kits provide all the necessary hardware and insulators required to securely mount the semiconductor to the chassis. Purchase the complete kit consisting of all hardware included in one package. Your choice of individual items available in 100 piece packages. Semiconductors customer supplied.