

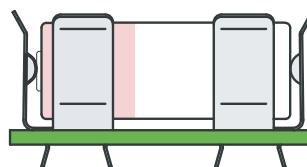
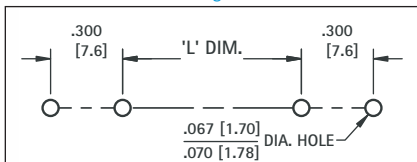
REFER TO PAGE 6 FOR PART DIMENSIONS

NOTE: ALL MOUNTING DIMENSIONS ARE FOR REFERENCE ONLY. VERIFY YOUR BATTERY LAYOUT PRIOR TO FABRICATION.

BATTERY CONTACTS LAYOUT & MOUNTING DETAILS

Mounting Detail

FIGURE 5



82
92
2915

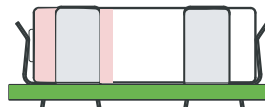
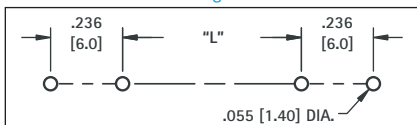
52

CAT. NO.	L DIMENSION		
	For "AAA" Battery Dimension	For "N" Battery Dimension	For "12 V" Battery Dimension
82 with 82	1.080 (27.4)	0.470 (11.9)	0.430 (10.9)

CAT. NO.	L DIMENSION						
	For "A" Battery Dimension	For "4/5 A" Battery Dimension	For "2/3 A" Battery Dimension	For "1/2 A" Battery Dimension	For "AA" Battery Dimension	For "4/5 AA" Battery Dimension	For "1/2 AA" Battery Dimension
52 with 52	1.110 (28.2)	1.030 (26.2)	0.650 (16.5)	0.310 (7.9)	1.320 (33.5)	1.030 (26.2)	0.310 (7.9)
92 with 92	1.110 (28.2)	1.030 (26.2)	0.650 (16.5)	0.310 (7.9)	1.320 (33.5)	1.030 (26.2)	0.310 (7.9)
2915 with 2915	1.110 (28.2)	1.030 (26.2)	0.650 (16.5)	0.310 (7.9)	1.320 (33.5)	1.030 (26.2)	0.310 (7.9)

Mounting Detail

FIGURE 6

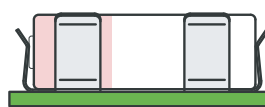
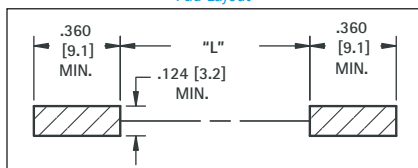


51

CAT. NO.	L DIMENSION
	For "AAAA" Battery Dimension
51 with 51	1.030 (26.2)

Pad Layout

FIGURE 7

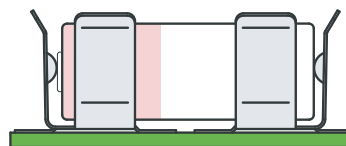
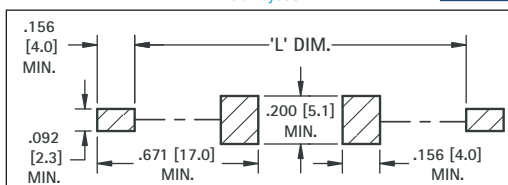


50

CAT. NO.	L DIMENSION
	For "AAAA" Battery Dimension
50 with 50	0.890 (22.6)

Pad Layout

FIGURE 8

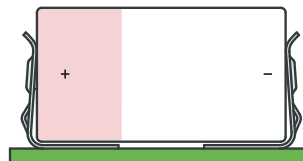
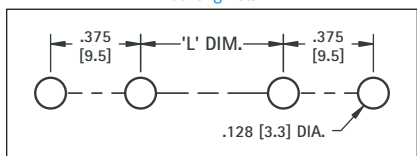


55

CAT. NO.	L DIMENSION		
	For "AAA" Battery Dimension	For "N" Battery Dimension	For "12V" Battery Dimension
55 with 55	1.800 (45.7)	1.200 (30.5)	1.150 (29.2)

Mounting Detail

FIGURE 9



206

207
208

CAT. NO.	L DIMENSION
	For "AA" Battery Dimension
206	1.100 (27.9)

CAT. NO.	L DIMENSION
	For "C" Battery Dimension
207	0.810 (20.6)

CAT. NO.	L DIMENSION
	For "D" Battery Dimension
208	1.250 (31.8)