

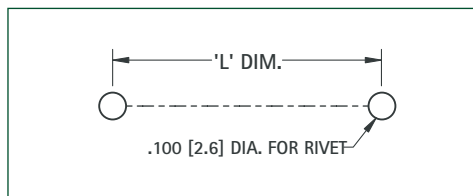
FIGURE 10



3565



Mounting Detail



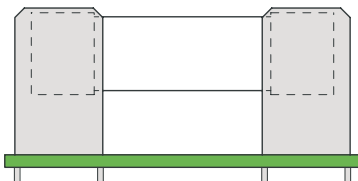
3565

CAT. NO. 3565		
DESIGNATION	FUSE SIZE	L DIM.
4AG	.281 (7.1) × 1.250 (31.8)	1.000 (25.4)

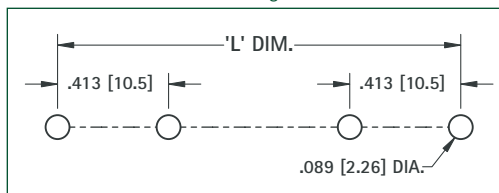
FIGURE 11



3566



Mounting Detail



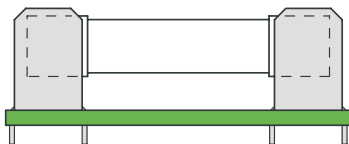
3566

CAT. NO. 3566		
DESIGNATION	FUSE SIZE	L DIM.
SM/SS	.406 (10.3) × 1.375 (34.9)	1.515 (38.5)
5AG	.406 (10.3) × 1.500 (38.1)	1.640 (41.7)

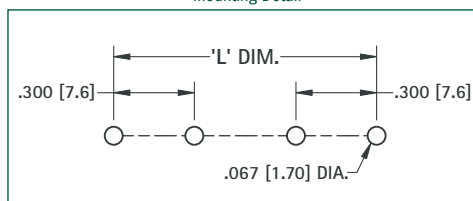
FIGURE 12



3529



Mounting Detail



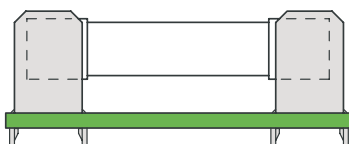
3514

CAT. NO. 3510, 3511, 3513, 3514, 3529		
DESIGNATION	FUSE SIZE	L DIM.
1AG	.250 (6.4) × .625 (15.9)	.750 (19.1)
7AG	.250 (6.4) × .875 (22.2)	1.000 (25.4)
8AG	.250 (6.4) × 1.000 (25.4)	1.125 (28.6)
3AG	.250 (6.4) × 1.250 (31.8)	1.375 (34.9)

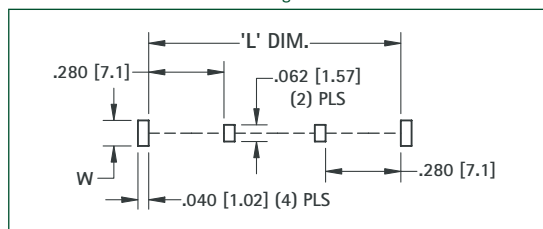
FIGURE 13



3516P



Mounting Detail



3515

CAT. NO. 3515, 3515P, 3516P		
DESIGNATION	FUSE SIZE	L DIM.
1AG	.250 (6.4) × .625 (15.9)	.735 (18.7)
7AG	.250 (6.4) × .875 (22.2)	.985 (25.0)
8AG	.250 (6.4) × 1.000 (25.4)	1.100 (28.0)
3AG	.250 (6.4) × 1.250 (31.8)	1.360 (34.6)

ORIENTATION LEGS	
CAT. NO.	W
3515	.062 (1.57)
3515P	.095 (2.4)
3516P	.122 (3.1)