

REFER TO PAGE 31 FOR PART DIMENSIONS

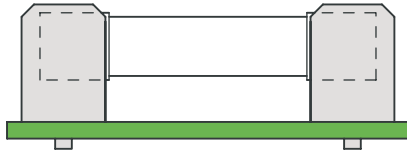
NOTE: ALL MOUNTING DIMENSIONS ARE FOR REFERENCE ONLY. VERIFY YOUR FUSE LAYOUT PRIOR TO FABRICATION.

FIGURE 14

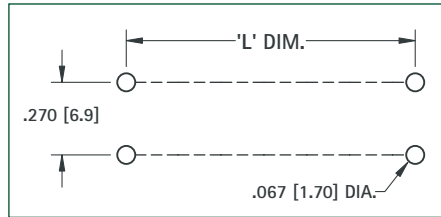
FOR THRU HOLE MOUNT APPLICATIONS



3530



Mounting Detail



3530

FOR CAT. NO. 3530

DESIGNATION	FUSE SIZE	L DIM.
1AG	.250 (6.4) × .625 (15.9)	.450 (11.4)
7AG	.250 (6.4) × .875 (22.2)	.700 (17.8)
8AG	.250 (6.4) × 1.000 (25.4)	.825 (21.0)
3AG	.250 (6.4) × 1.250 (31.8)	1.075 (27.3)

FIGURE 15

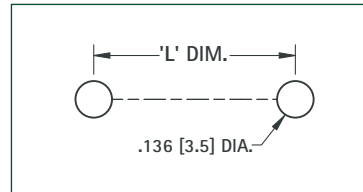
FOR RIVET MOUNT APPLICATIONS



3570



Mounting Detail



3535

FOR CAT. NO. 3531, 3533, 3535, 3570, 4244, 4246, 4247

DESIGNATION	FUSE SIZE	L DIM.
1AG	.250 (6.4) × .625 (15.9)	.450 (11.4)
7AG	.250 (6.4) × .875 (22.2)	.700 (17.8)
8AG	.250 (6.4) × 1.000 (25.4)	.825 (21.0)
3AG	.250 (6.4) × 1.250 (31.8)	1.075 (27.3)

FIGURE 16

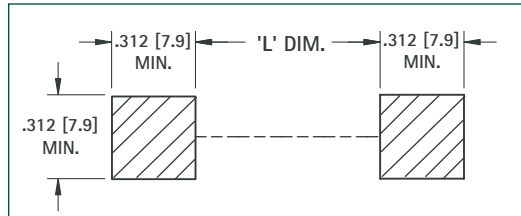
FOR SURFACE MOUNT APPLICATIONS



4244



Pad Layout



3533

FOR CAT. NO. 3531, 3533, 3535, 3570, 4244, 4246, 4247

DESIGNATION	FUSE SIZE	L DIM.
1AG	.250 (6.4) × .625 (15.9)	.120 (3.0)
7AG	.250 (6.4) × .875 (22.2)	.365 (9.3)
8AG	.250 (6.4) × 1.000 (25.4)	.490 (12.4)
3AG	.250 (6.4) × 1.250 (31.8)	.740 (18.8)

FIGURE 17

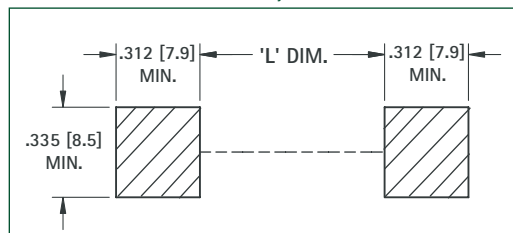
FOR SURFACE MOUNT APPLICATIONS



3532



Pad Layout



3567

FOR CAT. NO. 3532, 3567

DESIGNATION	FUSE SIZE	L DIM.
1AG	.250 (6.4) × .625 (15.9)	.195 (5.0)
7AG	.250 (6.4) × .875 (22.2)	.445 (11.3)
8AG	.250 (6.4) × 1.000 (25.4)	.570 (14.5)
3AG	.250 (6.4) × 1.250 (31.8)	.820 (20.8)