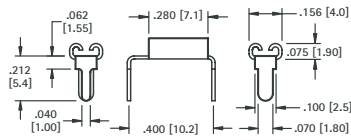


FEMALE PC QUICK-FIT TERMINALS

FEMALE PC QUICK-FIT TERMINALS

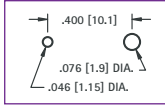
ACCEPTS .110 (2.8) TAB

HORIZONTAL ENTRY



MATERIAL:
.012 (.30) thick Brass,
Tin Nickel Plate

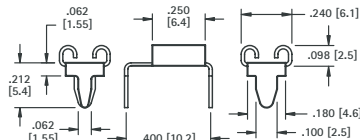
Mounting Detail



CAT. NO.	ACCEPTS TAB
3545	.110 (2.8) × .020 (.50)
3549	.110 (2.8) × .032 (.80)

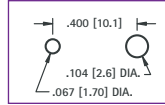
ACCEPTS .205 (5.2) TAB

HORIZONTAL ENTRY



MATERIAL:
.012 (.30) thick Brass,
Tin Nickel Plate

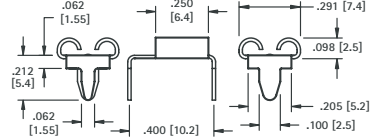
Mounting Detail



CAT. NO.	ACCEPTS TAB
3546	.205 (5.2) × .020 (.50)
3550	.205 (5.2) × .032 (.80)

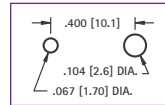
ACCEPTS .250 (6.4) TAB

HORIZONTAL ENTRY



MATERIAL:
.016 (.41) thick Brass,
Tin Nickel Plate

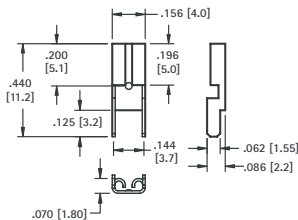
Mounting Detail



CAT. NO.	ACCEPTS TAB
3547	.250 (6.4) × .032 (.80)

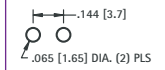
ACCEPTS .110 (2.8) TAB

VERTICAL ENTRY



MATERIAL:
.012 (.30) thick Brass,
Tin Nickel Plate

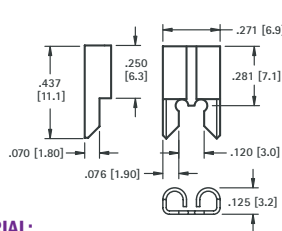
Mounting Detail



CAT. NO.	ACCEPTS TAB
3534	.110 (2.8) × .020 (.50)
3544	.110 (2.8) × .032 (.80)

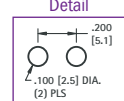
ACCEPTS .205 (5.2) TAB

VERTICAL ENTRY



MATERIAL:
Brass, Tin Nickel Plate

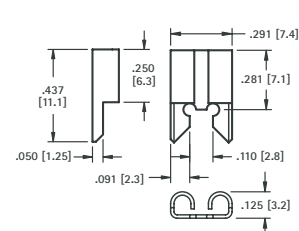
Mounting Detail



CAT. NO.	ACCEPTS TAB	MAT'L THICK
3525	.205 (5.2) × .020 (.50)	.012 (.30)
3522	.205 (5.2) × .025 (.60)	.016 (.40)
	.205 (5.2) × .032 (.80)	.016 (.40)

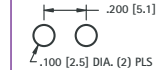
ACCEPTS .250 (6.4) TAB

VERTICAL ENTRY



MATERIAL:
.016 (.41) thick Brass,
Tin Nickel Plate

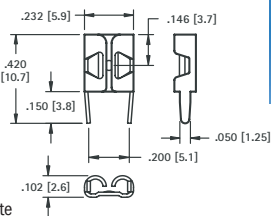
Mounting Detail



CAT. NO.	ACCEPTS TAB
3528	.250 (6.4) × .032 (.80)

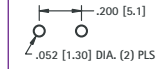
ACCEPTS .187 (4.8) TAB

VERTICAL ENTRY



MATERIAL:
.016 (.41) thick
Brass, Tin Nickel Plate

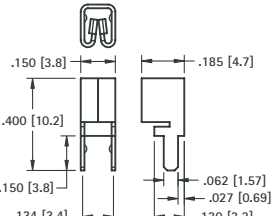
Mounting Detail



CAT. NO.	ACCEPTS TAB
3548	.187 (4.8) × .020 (.50)
3551	.187 (4.8) × .032 (.80)

ACCEPTS ALL TABS

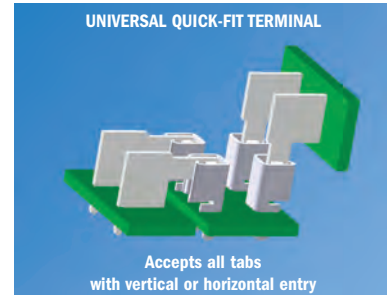
VERTICAL OR HORIZONTAL ENTRY



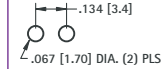
MATERIAL:
.016 (.41) thick Brass,
Tin Nickel Plate

Mounting Detail

CAT. NO.	ACCEPTS TAB
3557	.110 (2.8) to .250 (6.4) × .020 (.50) to .032 (.80)

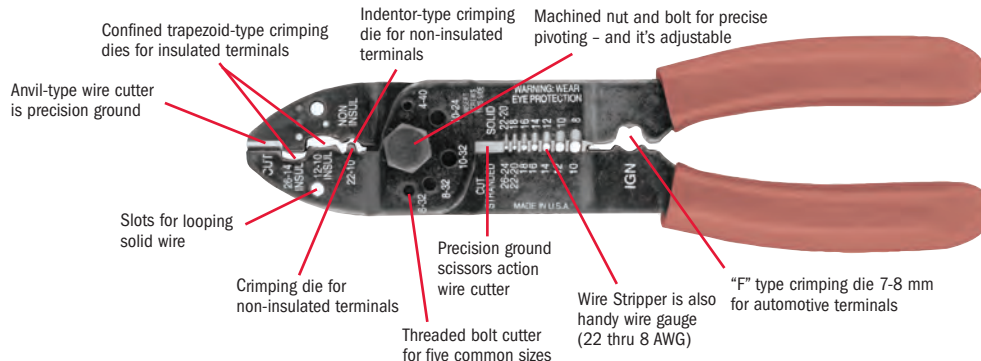


Mounting Detail



MULTI-PURPOSE HAND TOOL

- This Multi-purpose tool is all that is required to crimp wires into solderless terminals. Refer to pages 48 and 49.



CAT. NO. 1345

Tel (718) 956-8900 • Fax (718) 956-9040
(800) 221-5510 • kec@keyelco.com

KEYSTONE
RoHS COMPLIANT ~ ISO 9001 CERTIFIED

www.keyelco.com
31-07 20th Road - Astoria, NY 11105-2017