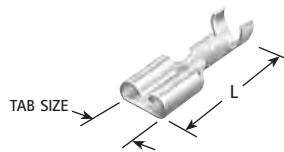




QUICK-FIT FEMALES

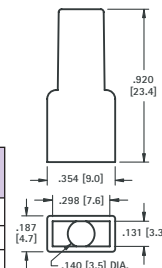
VINYL BOOT

FEMALE NON-INSULATED



For .250 (6.4) QUICK-FITS

- Easily slips over terminal
- Insulates and protects



MATERIAL: Tinned Brass

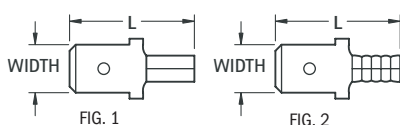
Boot and Quick-Fit sold separately

CAT. NO.	MATES WITH MALE TAB WIDTH × THICK	L	AWG SIZE	MAT'L THICK	CAT. NO.	BOOT COLOR
1252	.110 (2.8) × .020 (.51)	.640 (16.3)	18-22	.010 (.25)	4471	CLEAR
1264	.187 (4.8) × .020 (.51)	.576 (14.6)	16-22	.013 (.33)	4472	RED
4469	.205 (5.2) × .020 (.51)	.640 (16.3)	16-20	.013 (.33)	4473	BLUE
4470	.250 (6.4) × .020 (.51)	.750 (19.1)	16-20	.016 (.41)	4474	YELLOW

SOLDERLESS QUICK-FIT TERMINALS

Solderless terminals are made of pure electrolytic (ETP) copper annealed and tin plated. Insulation is color coded vinyl.

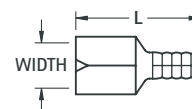
MALE NON-INSULATED



Hand Crimp Tool
CAT. NO. 1345

CAT. NO.	WIRE RANGE (AWG)	FIG.	MALE TAB		L	BARREL	
			WIDTH × THICK	L		LENGTH	I.D.
8281	22/18	2	.187 (4.8) × .020 (.51)	.64 (16.3)	.24 (6.3)	.080 (2.03)	
8282		1	.250 (6.4) × .032 (.81)	.73 (18.5)	.25 (6.4)	.065 (1.65)	
8283	16/14	2	.187 (4.8) × .020 (.51)	.64 (16.3)	.24 (6.3)	.080 (2.03)	
8284		1	.250 (6.4) × .032 (.81)	.73 (18.5)	.25 (6.4)	.085 (2.16)	
8285	12/10	1	.250 (6.4) × .032 (.81)	.75 (19.1)	.25 (6.4)	.150 (3.8)	

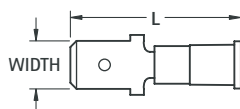
FEMALE NON-INSULATED



Hand Crimp Tool
CAT. NO. 1345

CAT. NO.	WIRE RANGE (AWG)	MATES WITH MALE TAB		L	BARREL .250 (6.4)	
		WIDTH × THICK	L		I.D.	
8272	22/18	.187 (4.8) × .020 (.51)	.58 (14.7)	.085 (2.16)		
8273		.250 (6.4) × .032 (.81)	.66 (16.8)	.080 (2.03)		
8274	16/14	.187 (4.8) × .020 (.51)	.58 (14.7)	.085 (2.16)		
8275		.250 (6.4) × .032 (.81)	.66 (16.8)	.080 (2.03)		

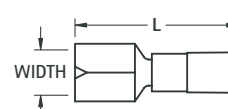
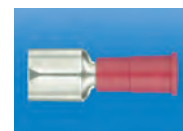
MALE VINYL INSULATED



Hand Crimp Tool
CAT. NO. 1345

CAT. NO.	WIRE RANGE (AWG)	MALE TAB		L	BARREL		MAX INSULATION DIAMETER
		WIDTH × THICK	L		LENGTH	I.D.	
8286	22/18 (Red)	.187 (4.8) × .020 (.51)	.85 (21.6)	.24 (6.3)	.080 (2.03)	.145 (3.7)	
8287		.250 (6.4) × .032 (.81)	.93 (23.6)	.25 (6.4)	.065 (1.65)	.145 (3.7)	
8288	16/14 (Blue)	.187 (4.8) × .020 (.51)	.85 (21.6)	.24 (6.3)	.080 (2.03)	.145 (3.7)	
8289		.250 (6.4) × .032 (.81)	.93 (23.6)	.25 (6.4)	.085 (2.16)	.170 (4.3)	
8290	12/10 (Yellow)	.250 (6.4) × .032 (.81)	1.05 (26.7)	.25 (6.4)	.150 (3.8)	.250 (6.4)	

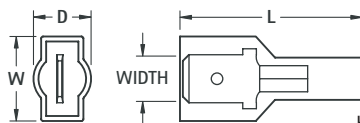
FEMALE VINYL INSULATED



Hand Crimp Tool
CAT. NO. 1345

CAT. NO.	WIRE RANGE (AWG)	MATES WITH MALE TAB		L	BARREL .250 (6.4)		MAX INSULATION DIAMETER
		WIDTH × THICK	L		I.D.		
8276	22/18 (Red)	.187 (4.8) × .020 (.51)	.78 (19.8)	.085 (2.16)			
8277		.250 (6.4) × .032 (.81)	.87 (22.1)	.080 (2.03)			
8278	16/14 (Blue)	.187 (4.8) × .020 (.51)	.78 (19.8)	.085 (2.16)			
8279		.250 (6.4) × .032 (.81)	.87 (22.1)	.080 (2.03)			
8280	12/10 (Yellow)	.250 (6.4) × .032 (.81)	.96 (24.4)	.165 (4.2)	.250 (6.4)		

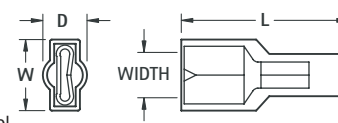
MALE FULLY INSULATED NYLON



Hand Crimp Tool
CAT. NO. 1345

CAT. NO.	WIRE RANGE (AWG)	MALE TAB		L	W	D	BARREL .250 (6.4)		MAX. INSUL. DIA.
		WIDTH × THICK	L				LENGTH	I.D.	
8296	22/18 (Red)	.187 (4.8) × .020 (.51)	.87 (22.1)	.37 (9.4)	.30 (7.6)	.24 (6.3)	.080 (2.03)	.145 (3.7)	
8297		.250 (6.4) × .032 (.81)	.95 (24.1)	.44 (11.2)	.30 (7.6)	.25 (6.4)	.065 (1.65)	.145 (3.7)	
8298	16/14 (Blue)	.187 (4.8) × .020 (.51)	.87 (22.1)	.37 (9.4)	.30 (7.6)	.24 (6.3)	.080 (2.03)	.170 (4.3)	
8299		.250 (6.4) × .032 (.81)	.95 (24.1)	.44 (11.2)	.30 (7.6)	.25 (6.4)	.085 (2.16)	.170 (4.3)	
8300	12/10 (Yellow)	.250 (6.4) × .032 (.81)	1.05 (26.7)	.47 (11.9)	.39 (9.9)	.25 (6.4)	.150 (3.8)	.250 (6.4)	

FEMALE FULLY INSULATED NYLON



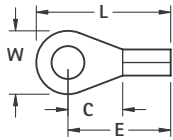
Hand Crimp Tool
CAT. NO. 1345

CAT. NO.	WIRE RANGE (AWG)	MATES WITH MALE TAB		L	W	D	BARREL .250 (6.4)		MAX. INSUL. DIA.
		WIDTH × THICK	L				I.D.		
8291	22/18 (Red)	.187 (4.8) × .020 (.51)	.81 (20.6)	.30 (7.6)	.23 (5.8)	.085 (2.16)	.145 (3.7)		
8292		.250 (6.4) × .032 (.81)	.87 (22.1)	.37 (9.4)	.23 (5.8)	.080 (2.03)	.145 (3.7)		
8293	16/14 (Blue)	.187 (4.8) × .020 (.51)	.81 (20.6)	.30 (7.6)	.23 (5.8)	.085 (2.16)	.145 (3.7)		
8294		.250 (6.4) × .032 (.81)	.87 (22.1)	.37 (9.4)	.23 (5.8)	.080 (2.03)	.170 (4.3)		
8295	12/10 (Yellow)	.250 (6.4) × .032 (.81)	.99 (25.1)	.39 (9.9)	.32 (8.1)	.165 (4.2)	.250 (6.4)		

RING TONGUE TERMINALS

Solderless terminals are made of pure electrolytic (ETP) copper and tin plated. Insulation is color coded vinyl.

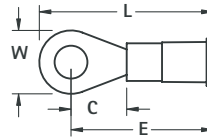
NON-INSULATED



Hand Crimp Tool
CAT. NO. 1345

CAT. NO.	WIRE RANGE (AWG)	FOR STUD SIZE	W	C	L	E	THICK	BARREL	
								LONG I.D.	MAX. INSUL. DIA.
8200	22/18	6	.25 (6.4)	.22 (5.6)	.60 (15.2)	.47 (11.9)	.030 (.76)	.070 (1.78)	
8201		8	.33 (8.4)	.29 (7.4)	.70 (17.8)	.54 (13.7)			
8202		10	.33 (8.4)	.29 (7.4)	.70 (17.8)	.54 (13.7)			
8203	16/14	6	.25 (6.4)	.22 (5.6)	.60 (15.2)	.47 (11.9)	.030 (.76)	.090 (2.29)	
8204		8	.33 (8.4)	.29 (7.4)	.70 (17.8)	.54 (13.7)			
8205		10	.33 (8.4)	.29 (7.4)	.70 (17.8)	.54 (13.7)			
8206	12/10	6	.28 (7.1)	.29 (7.4)	.68 (17.3)	.54 (13.7)	.040 (1.02)	.135 (3.4)	
8207		8	.38 (9.7)	.29 (7.4)	.73 (18.5)	.54 (13.7)			
8208		10	.38 (9.7)	.29 (7.4)	.73 (18.5)	.54 (13.7)			

VINYL INSULATED



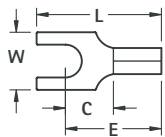
Hand Crimp Tool
CAT. NO. 1345

CAT. NO.	WIRE RANGE (AWG)	FOR STUD SIZE	W	C	L	E	THICK	BARREL		MAX. INSUL. DIA.
								LONG I.D.	MAX. INSUL. DIA.	
8209	22/18 (Red)	6	.25 (6.4)	.22 (5.6)	.80 (20.3)	.67 (17.0)	.030 (.76)	.070 (1.78)	.145 (3.7)	
8210		8	.33 (8.4)	.29 (7.4)	.90 (22.9)	.74 (18.8)				
8211		10	.33 (8.4)	.29 (7.4)	.90 (22.9)	.74 (18.8)				
8212	16/14 (Blue)	6	.25 (6.4)	.22 (5.6)	.80 (20.3)	.67 (17.0)	.030 (.76)	.090 (2.29)	.170 (4.3)	
8213		8	.33 (8.4)	.29 (7.4)	.90 (22.9)	.74 (18.8)				
8214		10	.33 (8.4)	.29 (7.4)	.90 (22.9)	.74 (18.8)				
8215	12/10 (Yellow)	6	.28 (7.1)	.29 (7.4)	.98 (24.9)	.84 (21.3)	.040 (1.02)	.135 (3.4)	.250 (6.4)	
8216		8	.38 (9.7)	.29 (7.4)	1.03 (26.2)	.84 (21.3)				
8217		10	.38 (9.7)	.29 (7.4)	1.03 (26.2)	.84 (21.3)				

BLOCK SPADE TERMINALS

Solderless terminals are made of pure electrolytic (ETP) copper and tin plated. Insulation is color coded vinyl.

NON-INSULATED

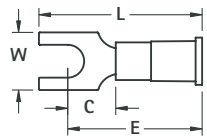


Flanged

Hand Crimp Tool
CAT. NO. 1345

CAT. NO.	WIRE RANGE (AWG)	FOR STUD SIZE	W	C	L	E	THICK	BARREL		FLANGED		
								LONG I.D.	CAT. NO.			
8218	22/18	6	.30 (7.6)	.25 (6.4)	.65 (16.5)	.50 (12.7)	.030 (.76)	.070 (1.78)		.8236	8236	
8219		8										8237
8220		10										8238
8221	16/14	6	.30 (7.6)	.25 (6.4)	.65 (16.5)	.50 (12.7)	.030 (.76)	.090 (2.29)		.8239	8240	
8222		8										8241
8223		10										8242
8224	12/10	6	.32 (8.1)	.29 (7.4)	.73 (18.5)	.54 (13.7)	.040 (1.02)	.135 (3.4)		.8243	8244	
8225		8										8243
8226		10										8244

VINYL INSULATED



Flanged

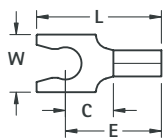
Hand Crimp Tool
CAT. NO. 1345

CAT. NO.	WIRE RANGE (AWG)	FOR STUD SIZE	W	C	L	E	THICK	BARREL		FLANGED		
								LONG I.D.	MAX. INSUL. DIA.	CAT. NO.		
8227	22/18 (Red)	6	.30 (7.6)	.25 (6.4)	.85 (21.6)	.70 (17.8)	.030 (.76)	.070 (1.78)	.145 (3.7)		8245	
8228		8										8246
8229		10										8247
8230	16/14 (Blue)	6	.30 (7.6)	.25 (6.4)	.85 (21.6)	.70 (17.8)	.030 (.76)	.090 (2.29)	.175 (4.4)		8248	
8231		8										8249
8232		10										8250
8233	12/10 (Yellow)	6	.32 (8.1)	.29 (7.4)	1.03 (26.2)	.84 (21.3)	.040 (1.02)	.135 (3.4)	.255 (6.5)		8251	
8234		8										8252
8235		10										8253

SNAP-SPADE TERMINALS

Solderless terminals are made of pure electrolytic (ETP) copper and tin plated. Insulation is color coded vinyl.

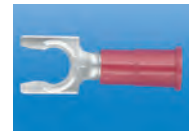
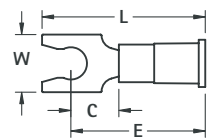
NON-INSULATED



Hand Crimp Tool
CAT. NO. 1345

CAT. NO.	WIRE RANGE (AWG)	FOR STUD SIZE	W	C	L	E	THICK	BARREL	
								LONG I.D.	MAX. INSUL. DIA.
8254	22/18	6	.25 (6.4)	.25 (6.4)	.68 (17.3)	.50 (12.7)	.030 (.76)	.070 (1.78)	
8255		8	.30 (7.6)						
8256		10	.32 (8.1)						
8257	16/14	6	.25 (6.4)	.25 (6.4)	.68 (17.3)	.50 (12.7)	.030 (.76)	.090 (2.29)	
8258		8	.30 (7.6)						
8259		10	.32 (8.1)						
8260	12/10	6	.28 (7.3)	.28 (7.3)	.73 (18.5)	.53 (13.6)	.040 (1.02)	.135 (3.4)	
8261		8	.32 (8.1)						
8262		10	.32 (8.1)						

VINYL INSULATED



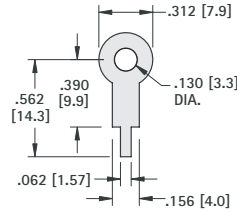
Hand Crimp Tool
CAT. NO. 1345

CAT. NO.	WIRE RANGE (AWG)	FOR STUD SIZE	W	C	L	E	THICK	BARREL		MAX. INSUL. DIA.
								LONG I.D.	MAX. INSUL. DIA.	
8263	22/18 (Red)	6	.25 (6.4)	.25 (6.4)	.88 (22.4)	.70 (17.8)	.030 (.76)	.070 (1.78)	.145 (3.7)	
8264		8	.30 (7.6)							
8265		10	.32 (8.1)							
8266	16/14 (Blue)	6	.25 (6.4)	.25 (6.4)	.88 (22.4)	.70 (17.8)	.030 (.76)	.090 (2.29)	.170 (4.3)	
8267		8	.30 (7.6)							
8268		10	.32 (8.1)							
8269	12/10 (Yellow)	6	.28 (7.3)	.28 (7.3)	1.03 (26.2)	.83 (21.2)	.040 (1.02)	.135 (3.4)	.250 (6.4)	
8270		8	.32 (8.1)							
8271		10	.32 (8.1)							

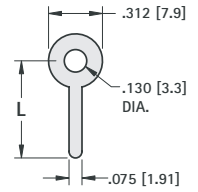
SOLDERLESS TERMINALS



PC TERMINAL LUGS



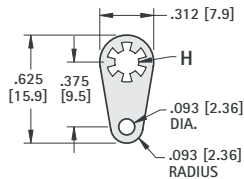
MATERIAL: .015 (.38) thick Brass, Tin Plate
CAT. NO. 680



MATERIAL: .020 (.51) thick Brass, Tin Plate

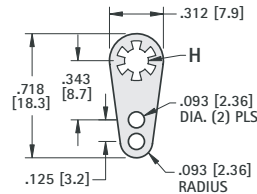
CAT. NO.	L
4000	.500 (12.7)
4001	.562 (14.3)
4002	.750 (19.1)
4003	1.000 (25.4)

LOCKWASHER TERMINAL LUGS



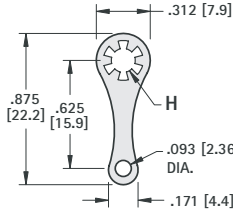
MATERIAL: .018 (.46) thick Brass, Tin Plate

CAT. NO.	H	STUD SIZE
908	.120 (3.1)	#4
914	.140 (3.6)	#6
915	.171 (4.4)	#8



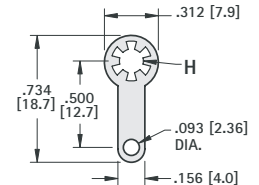
MATERIAL: .018 (.46) thick Brass, Tin Plate

CAT. NO.	H	STUD SIZE
910	.120 (3.1)	#4
918	.140 (3.6)	#6
906	.171 (4.4)	#8



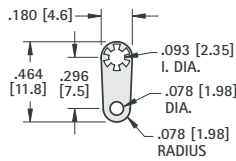
MATERIAL: .018 (.46) thick Brass, Tin Plate

CAT. NO.	H	STUD SIZE
903	.120 (3.1)	#4
904	.140 (3.6)	#6
905	.171 (4.4)	#8



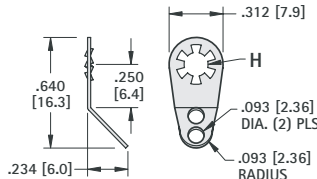
MATERIAL: .018 (.46) thick Brass, Tin Plate

CAT. NO.	H	STUD SIZE
909	.120 (3.1)	#4
916	.140 (3.6)	#6
917	.171 (4.4)	#8



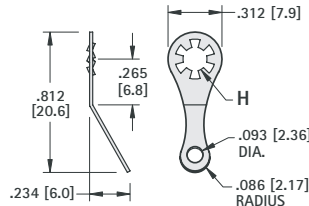
MATERIAL: .013 (.33) thick Brass, Tin Plate

CAT. NO. 907



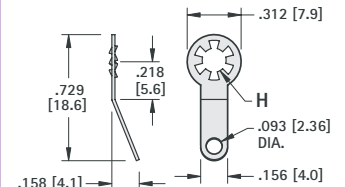
MATERIAL: .018 (.46) thick Brass, Tin Plate

CAT. NO.	H	STUD SIZE
7311	.120 (3.1)	#4
7312	.140 (3.6)	#6
7313	.171 (4.4)	#8



MATERIAL: .018 (.46) thick Brass, Tin Plate

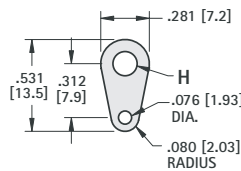
CAT. NO.	H	STUD SIZE
7317	.120 (3.1)	#4
7318	.140 (3.6)	#6
7319	.171 (4.4)	#8



MATERIAL: .018 (.46) thick Brass, Tin Plate

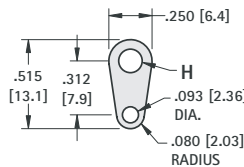
CAT. NO.	H	STUD SIZE
7314	.120 (3.1)	#4
7315	.140 (3.6)	#6
7316	.171 (4.4)	#8

SOLDER TERMINAL LUGS



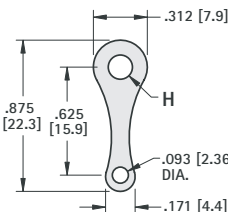
MATERIAL: .015 (.38) thick Brass, Tin Plate

CAT. NO.	H	STUD SIZE
7328	.120 (3.1)	#4
7329	.140 (3.6)	#6
7330	.171 (4.4)	#8



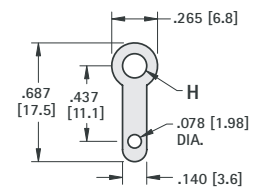
MATERIAL: .016 (.41) thick Brass, Tin Plate

CAT. NO. 4004



MATERIAL: .020 (.51) thick Brass, Tin Plate

CAT. NO.	H	STUD SIZE
7331	.120 (3.1)	#4
7332	.140 (3.6)	#6
7333	.171 (4.4)	#8



MATERIAL: .020 (.51) thick Brass, Tin Plate

CAT. NO.	H	STUD SIZE
7325	.120 (3.1)	#4
7326	.140 (3.6)	#6
7327	.171 (4.4)	#8