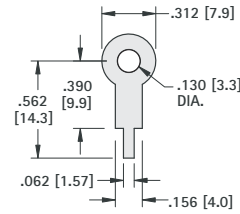
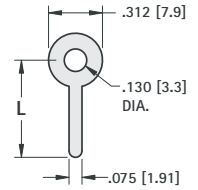




PC TERMINAL LUGS



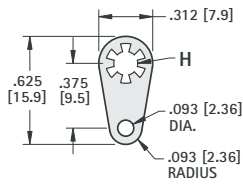
MATERIAL: .015 (.38) thick Brass, Tin Plate
CAT. NO. 680



MATERIAL: .020 (.51) thick Brass, Tin Plate

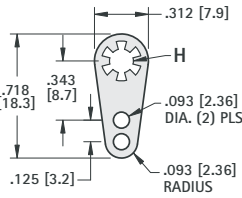
CAT. NO.	L
4000	.500 (12.7)
4001	.562 (14.3)
4002	.750 (19.1)
4003	1.000 (25.4)

LOCKWASHER TERMINAL LUGS



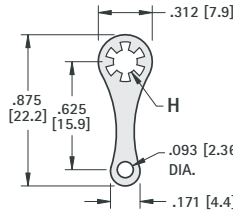
MATERIAL: .018 (.46) thick Brass, Tin Plate

CAT. NO.	H	STUD SIZE
908	.120 (3.1)	#4
914	.140 (3.6)	#6
915	.171 (4.4)	#8



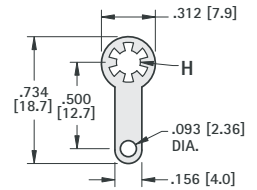
MATERIAL: .018 (.46) thick Brass, Tin Plate

CAT. NO.	H	STUD SIZE
910	.120 (3.1)	#4
918	.140 (3.6)	#6
906	.171 (4.4)	#8



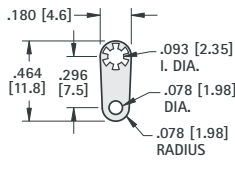
MATERIAL: .018 (.46) thick Brass, Tin Plate

CAT. NO.	H	STUD SIZE
903	.120 (3.1)	#4
904	.140 (3.6)	#6
905	.171 (4.4)	#8

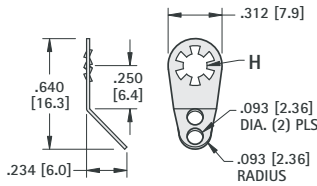


MATERIAL: .018 (.46) thick Brass, Tin Plate

CAT. NO.	H	STUD SIZE
909	.120 (3.1)	#4
916	.140 (3.6)	#6
917	.171 (4.4)	#8

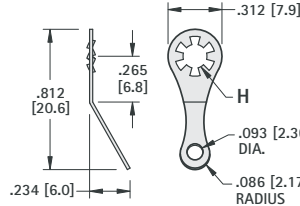


MATERIAL: .013 (.33) thick Brass, Tin Plate
CAT. NO. 907



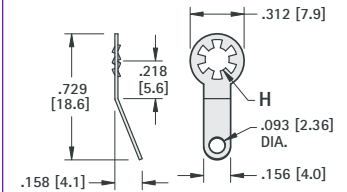
MATERIAL: .018 (.46) thick Brass, Tin Plate

CAT. NO.	H	STUD SIZE
7311	.120 (3.1)	#4
7312	.140 (3.6)	#6
7313	.171 (4.4)	#8



MATERIAL: .018 (.46) thick Brass, Tin Plate

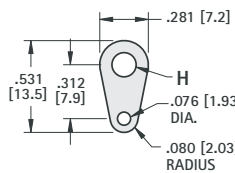
CAT. NO.	H	STUD SIZE
7317	.120 (3.1)	#4
7318	.140 (3.6)	#6
7319	.171 (4.4)	#8



MATERIAL: .018 (.46) thick Brass, Tin Plate

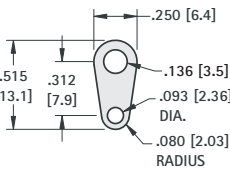
CAT. NO.	H	STUD SIZE
7314	.120 (3.1)	#4
7315	.140 (3.6)	#6
7316	.171 (4.4)	#8

SOLDER TERMINAL LUGS

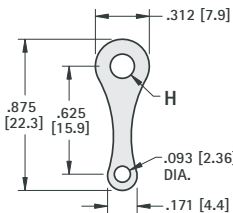


MATERIAL: .015 (.38) thick Brass, Tin Plate

CAT. NO.	H	STUD SIZE
7328	.120 (3.1)	#4
7329	.140 (3.6)	#6
7330	.171 (4.4)	#8

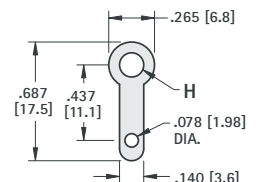


MATERIAL: .016 (.41) thick Brass, Tin Plate
CAT. NO. 4004



MATERIAL: .020 (.51) thick Brass, Tin Plate

CAT. NO.	H	STUD SIZE
7331	.120 (3.1)	#4
7332	.140 (3.6)	#6
7333	.171 (4.4)	#8

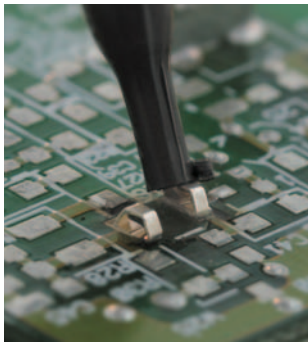


MATERIAL: .020 (.51) thick Brass, Tin Plate

CAT. NO.	H	STUD SIZE
7325	.120 (3.1)	#4
7326	.140 (3.6)	#6
7327	.171 (4.4)	#8
7340	.196 (5.0)	#10

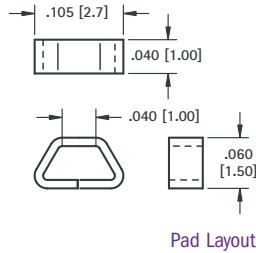
(SMT) SURFACE MOUNT TEST POINTS ON TAPE & REEL

MINIATURE



- Ultra low profile, ideally suited for advanced surface mount printed circuit board applications
- Designed for long life and durability
- Manufactured using flat wire to provide a large mounting surface area
- Ideal for use with miniature probes, clips, and hooks
- Efficient, safe, board level testing

SUPPLIED ON TAPE AND REEL



SPECIFICATIONS

Contact Material:

.010 (.25) thick Phosphor Bronze

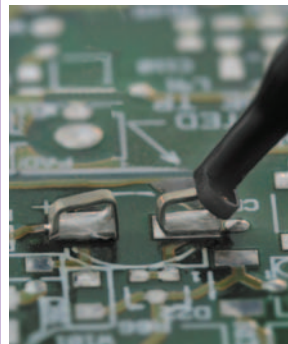
Contact Finish: Silver Plate

Tape Material: 8mm wide; 4mm pitch; conductive polycarbonate carrier tape meets ANSI/EIA-481 standard

CAT. NO. 5015 - 1000 pieces per reel

CAT. NO. 5017 - 5000 pieces per reel

COMPACT



- Unique design provides exceptional strength and durability
- Simplifies testing on dense SMT circuit boards
- Ideal for use with most standard probes, clips and hooks
- Efficient, safe, board level testing

SUPPLIED ON TAPE AND REEL

SPECIFICATIONS

Contact Material:

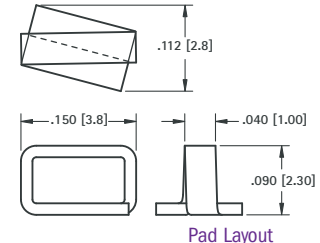
.015 (.38) thick Phosphor Bronze

Contact Finish: Silver Plate

Tape Material: 12mm wide; 4mm pitch; conductive polycarbonate carrier tape meets ANSI/EIA-481 standard

CAT. NO. 5016 - 1000 pieces per reel

CAT. NO. 5018 - 5000 pieces per reel

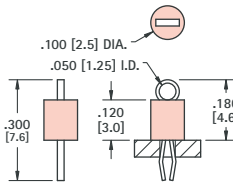


(THM) THRU HOLE MOUNT TEST POINTS - COLOR KEYED

- Color keyed for visibility and quick identification
- Economical choice for PC test point terminations
- Snap-fit mounting provides positive retention for wave soldering
- Wire form loop for safe, non-slip testing
- Space saving, ultra low and low profile designs
- High profile design for difficult to reach applications
- Suitable for high density packaging on .062 (1.57) and .093 (2.36) PC boards
- Practical replacement for wire-wrap posts and turrets
- Secure grip for J hooks, EZ hooks, grabbers, alligator clips, tips or probes
- High temperature nylon base ideal for reflow soldering
- Ideal for reliable production testing and field service troubleshooting



MINIATURE



SPECIFICATIONS

Terminal:

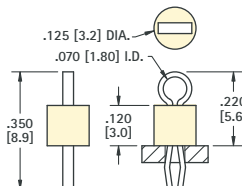
.010 (.25) x .020 (.51) thick Phosphor Bronze Wire, Silver Plate

Base: Nylon 46, UL Rated 94V-0

Mtg. Hole: .040 (1.0) Diameter

CAT. NO.	BASE COLOR	CAT. NO.	BASE COLOR
5000	RED	5115	BROWN
5001	BLACK	5116	GREEN
5002	WHITE	5117	BLUE
5003	ORANGE	5118	GREY
5004	YELLOW	5119	PURPLE

COMPACT



SPECIFICATIONS

Terminal:

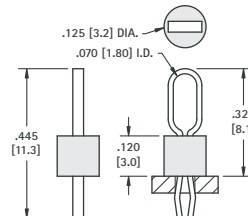
.015 (.38) x .032 (.81) thick Phosphor Bronze Wire, Silver Plate

Base: Nylon 46, UL Rated 94V-0

Mtg. Hole: .063 (1.6) Diameter

CAT. NO.	BASE COLOR	CAT. NO.	BASE COLOR
5005	RED	5120	BROWN
5006	BLACK	5121	GREEN
5007	WHITE	5122	BLUE
5008	ORANGE	5123	GREY
5009	YELLOW	5124	PURPLE

MULTIPURPOSE



SPECIFICATIONS

Terminal:

.015 (.38) x .032 (.81) thick Phosphor Bronze Wire, Silver Plate

Base: Nylon 46, UL Rated 94V-0

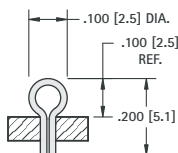
Mtg. Hole: .063 (1.6) Diameter

CAT. NO.	BASE COLOR	CAT. NO.	BASE COLOR
5010	RED	5125	BROWN
5011	BLACK	5126	GREEN
5012	WHITE	5127	BLUE
5013	ORANGE	5128	GREY
5014	YELLOW	5129	PURPLE

ULTRA LOW PROFILE

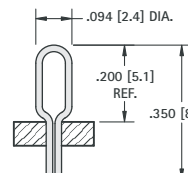
WITHOUT BASE

SHOWN AS INSTALLED INTO .040 [1.02] DIA. MOUNTING HOLE



CAT. NO.	BASE COLOR
5021	NONE

MATERIAL: .017 (.43) Diameter Phosphor Bronze, Silver Plate
Mtg. Hole: .040 (1.0) Diameter



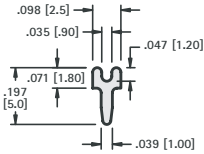
SHOWN AS INSTALLED INTO .040 [1.02] DIA. MOUNTING HOLE

CAT. NO.	BASE COLOR
5020	NONE



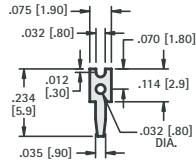
- Low profile, space saving designs for dense packaging
- Wide variety of configurations to suit most applications
- Safe, practical, economical replacement for wire-wrap posts
- Easy mount design, ideal for wave soldering
- Re-fit PC boards without need for re-design
- Provides easy access for production testing and field service troubleshooting
- Positive grip when using J hooks, EZ hooks, grabbers, clips, tips and probes
- Custom test point terminals can be manufactured to your specifications
- Other platings and materials available upon request

PC TEST POINTS - SLOTTED



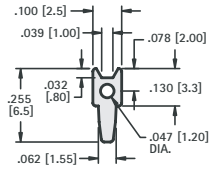
CAT. NO. 4950

MATERIAL:
.025 (.64) thick Brass,
Tin Plate



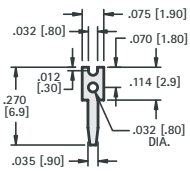
CAT. NO. 1030

MATERIAL:
.025 (.64) thick Brass,
Tin Plate



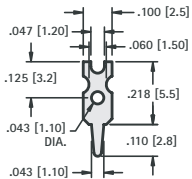
CAT. NO. 1032

MATERIAL:
.025 (.64) thick Brass,
Tin Plate



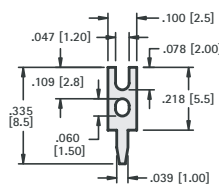
CAT. NO. 1031

MATERIAL:
.020 (.51) thick Brass,
Tin Plate



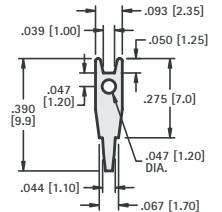
CAT. NO. 1034

MATERIAL:
.025 (.64) thick Brass,
Tin Plate



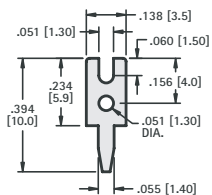
CAT. NO. 1035

MATERIAL:
.020 (.51) thick Brass,
Tin Plate



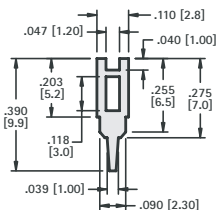
CAT. NO. 1036

MATERIAL:
.025 (.64) thick Brass,
Tin Plate



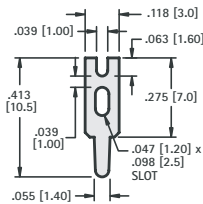
CAT. NO. 1039

MATERIAL:
.025 (.64) thick Brass,
Tin Plate



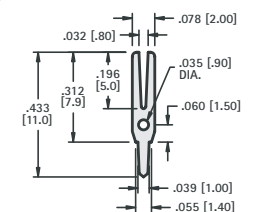
CAT. NO. 1040

MATERIAL:
.025 (.64) thick Brass,
Tin Plate



CAT. NO. 4951

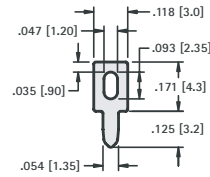
MATERIAL:
.025 (.64) thick Brass,
Tin Plate



CAT. NO. 1037

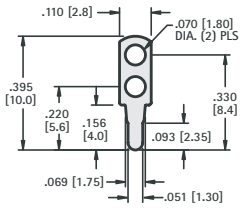
MATERIAL:
.016 (.41) thick Brass,
Tin Plate

PC TEST POINTS - LOOP TYPES



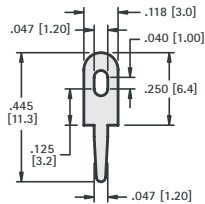
CAT. NO. 1033

MATERIAL:
.025 (.64) thick Brass,
Tin Plate



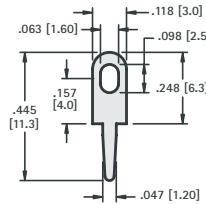
CAT. NO. 1038

MATERIAL:
.020 (.51) thick Brass,
Tin Plate



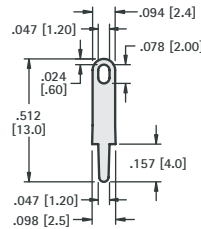
CAT. NO. 1249

MATERIAL:
.025 (.64) thick Brass,
Tin Plate



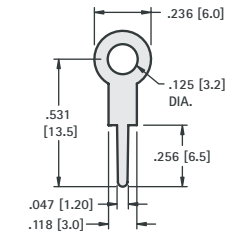
CAT. NO. 4952

MATERIAL:
.025 (.64) thick Brass,
Tin Plate



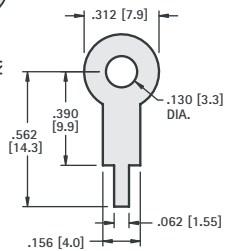
CAT. NO. 4953

MATERIAL:
.020 (.51) thick Brass,
Tin Plate



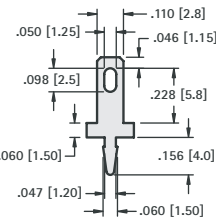
CAT. NO. 4954

MATERIAL:
.020 (.51) thick Brass,
Tin Plate



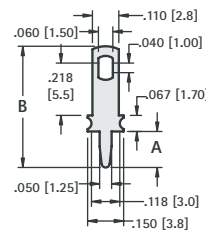
CAT. NO. 680

MATERIAL:
.015 (.38) thick Brass,
Tin Plate



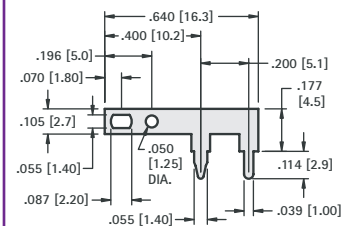
CAT. NO. 1250

MATERIAL:
.020 (.51) thick Brass,
Tin Plate



MATERIAL: .032 (.81) thick Brass, Tin Plate

CAT. NO.	A	B
1041	.275 (7.0)	.630 (16.0)
1046	.150 (3.8)	.503 (12.8)



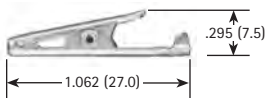
CAT. NO. 1045

MATERIAL:
.025 (.64) thick Brass,
Tin Plate

ALLIGATOR CLIPS

SMALL CLIP

- Solder Connection with Strain Relief
- Insulated or Non-Insulated



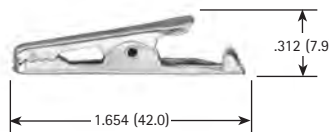
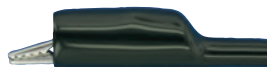
CAT. NO.	INSULATOR COLOR
5033	NONE
5034	RED
5035	BLACK
5036	GREEN
5037	YELLOW

JAW SPREAD
.236 (6.0) max.

MATERIAL:
Clip: Steel, Nickel Plate
Insulator: Vinyl

MEDIUM CLIP

- Solder Connection with Strain Relief
- Insulated or Non-Insulated



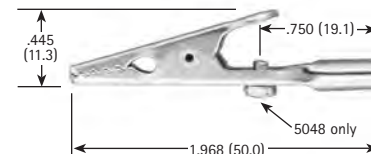
CAT. NO.	INSULATOR COLOR
5038	NONE
5039	RED
5040	BLACK

JAW SPREAD
.236 (6.0) max.

MATERIAL:
Clip: Steel, Nickel Plate
Insulator: Vinyl

LARGE CLIP

- Solder Connection or Screw Connection (Barrel Accepts Wire or Standard Banana Plugs)
- Insulated or Non-Insulated



CAT. NO.	INSULATOR COLOR
5044	NONE
5045	RED
5046	BLACK
5048	SCREW INSTALLED

JAW SPREAD
.315 (8.0) max.

MATERIAL:
Clip: Steel, Nickel Plate
Insulator: Vinyl