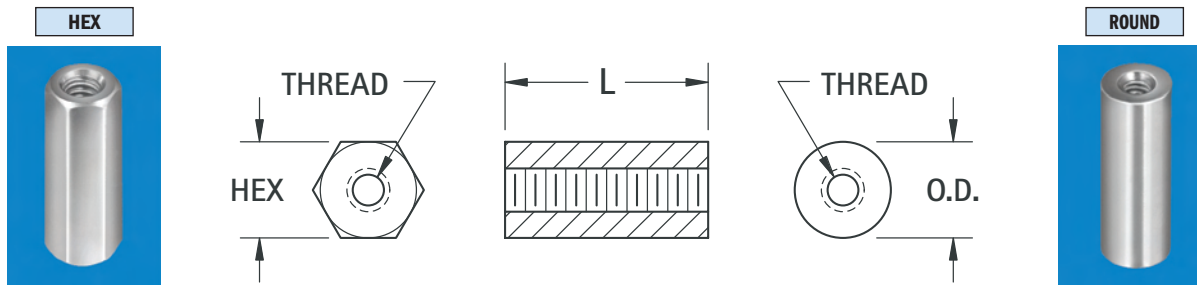


# FEMALE THREADED STANDOFFS



CHOICE OF:			
Stainless: ASTM A581/A582	Brass: per ASTM-B16 Plating: Zinc ASTM B633	Aluminum: ASTM B211 Plating: Clear Iridite Finish (Mil-C-5541)	Phenolic: PBE Grade Natural Color Phenolic

HEX	HEX			LENGTH	ROUND			O.D.
	STAINLESS CAT. NO.	BRASS CAT. NO.	ALUMINUM CAT. NO.		BRASS CAT. NO.	ALUMINUM CAT. NO.	PHENOLIC CAT. NO.	
<b>2-56 THREAD</b>								
.156 (3.9)	—	1798A	1797A	.187 (4.7)	1802A	1801A	—	.156 (3.9)
	—	1798B	1797B	.250 (6.4)	1802B	1801B	—	
	—	1798C	1797C	.312 (7.9)	1802C	1801C	—	
	—	1798D	1797D	.375 (9.5)	1802D	1801D	—	
<b>4-40 THREAD</b>								
.187 (4.7)	—	1450	1891	.250 (6.4)	1547	2025	—	.187 (4.7)
	—	1803	1892	.375 (9.5)	1864	2026	—	
	—	1656	1893	.500 (12.7)	1657	2027	—	
	—	1804	1894	.625 (15.9)	1865	2028	—	
	—	1656A	1895	.750 (19.1)	1657A	2029	—	
	—	1805	1896	.875 (22.2)	1866	2030	—	
	—	1656B	1897	1.000 (25.4)	1657B	2031	—	
.250 (6.4)	1921	1450A	2201	.250 (6.4)	1547A	3478	376	.250 (6.4)
	1921A	1450B	2202	.375 (9.5)	1547B	3479	377	
	1921B	1450C	2203	.500 (12.7)	1547C	3480	378	
	—	1829	1808	.625 (15.9)	1867	1839	—	
	1921C	1450D	2204	.750 (19.1)	1547D	3481	379	
	—	1830	1809	.875 (22.2)	1876	1846	—	
	1921D	1450E	2205	1.000 (25.4)	1547E	3482	380	
	1921E	1831	2206	1.500 (38.1)	1877	3483	381	
1921F	1832	2207	2.000 (50.8)	1878	3484	382		
<b>6-32 THREAD</b>								
.250 (6.4)	1922	1451A	2208	.250 (6.4)	1548A	3485	383	.250 (6.4)
	1922A	1451B	2209	.375 (9.5)	1548B	3486	384	
	1922B	1451C	2210	.500 (12.7)	1548C	3487	385	
	—	1451D	1813	.625 (15.9)	1548D	1847	—	
	1922C	1451E	2211	.750 (19.1)	1548E	3488	386	
	—	1833	1816	.875 (22.2)	1879	1848	—	
	1922D	1635	2212	1.000 (25.4)	1548F	3489	387	
	—	1636	1818	1.250 (31.8)	1881	1853	—	
	1922E	1637	2213	1.500 (38.1)	1882	3490	388	
	—	1638	1819	1.750 (44.5)	1883	1855	—	
	1922F	1639	2214	2.000 (50.8)	1884	3491	389	
	—	1642	1820	2.250 (57.2)	1885	1856	—	
	—	1643	1825	2.500 (63.5)	1886	1857	—	
	<b>8-32 THREAD</b>							
.250 (6.4)	1923	1474A	2215	.250 (6.4)	1692A	3492	390	.250 (6.4)
	1923A	1474B	2216	.375 (9.5)	1692B	3493	391	
	1923B	1474C	2217	.500 (12.7)	1692C	3494	392	
	—	1834	1827	.625 (15.9)	1887	1858	—	
	1923C	1474D	2218	.750 (19.1)	1692D	3495	393	
	—	1836	1828	.875 (22.2)	1888	1859	—	
	1923D	1474E	2219	1.000 (25.4)	1692E	3496	394	
	1923E	1837	2220	1.500 (38.1)	1889	3497	395	
	1923F	1838	2221	2.000 (50.8)	1899	3498	396	
<b>10-32 THREAD</b>								
.312 (7.9)	1475A	1822A	1821A	.375 (9.5)	3499A	3500A	468	.312 (7.9)
	1475B	1822B	1821B	.500 (12.7)	3499B	3500B	469	
	1475C	1822C	1821C	.625 (15.9)	3499C	3500C	—	
	1475D	1822D	1821D	.750 (19.1)	3499D	3500D	470	
	1475F	1822F	1821F	1.000 (25.4)	3499F	3500F	471	

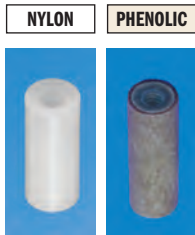
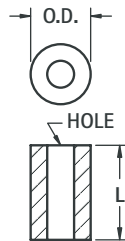
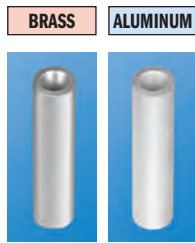
NOTE: All standoffs over 1.000 (25.4) are tapped .375 (9.5) min. both ends, except 4-40 standoffs which are tapped .250 (6.4) min.

# ROUND CLEAR HOLE SPACERS

CLEAR HOLE	O.D.	L LENGTH	BRASS CAT. NO.	ALUMINUM CAT. NO.
.120 (3.0) For #4	.250 (6.4)	.125 (3.2)	<b>1909</b>	<b>2036</b>
		.250 (6.4)	<b>1454A</b>	<b>3457</b>
		.375 (9.5)	<b>1454B</b>	<b>3458</b>
		.500 (12.7)	<b>1454C</b>	<b>3459</b>
		.625 (15.9)	<b>1919</b>	<b>2314</b>
		.750 (19.1)	<b>1454D</b>	<b>3460</b>
		.875 (22.2)	<b>1920</b>	<b>3402</b>
		1.000 (25.4)	<b>1454E</b>	<b>3461</b>
		1.500 (38.1)	<b>1924</b>	<b>3462</b>
2.000 (50.8)	<b>1925</b>	<b>3463</b>		
.140 (3.5) For #6	.250 (6.4)	.125 (3.2)	<b>1934</b>	<b>3403</b>
		.250 (6.4)	<b>1457A</b>	<b>3464</b>
		.375 (9.5)	<b>1457B</b>	<b>3465</b>
		.500 (12.7)	<b>1457C</b>	<b>3466</b>
		.625 (15.9)	<b>1935</b>	<b>3429</b>
		.750 (19.1)	<b>1457D</b>	<b>3467</b>
		.875 (22.2)	<b>1936</b>	<b>3438</b>
		1.000 (25.4)	<b>1457E</b>	<b>3468</b>
		1.500 (38.1)	<b>1937</b>	<b>3469</b>
2.000 (50.8)	<b>1938</b>	<b>3470</b>		
.171 (4.3) For #8	.250 (6.4)	.125 (3.2)	<b>1942</b>	<b>4258</b>
		.250 (6.4)	<b>1480</b>	<b>3471</b>
		.375 (9.5)	<b>1481</b>	<b>3472</b>
		.500 (12.7)	<b>1482</b>	<b>3473</b>
		.625 (15.9)	<b>2032</b>	<b>4259</b>
		.750 (19.1)	<b>1483</b>	<b>3474</b>
		.875 (22.2)	<b>2033</b>	<b>4260</b>
		1.000 (25.4)	<b>1484</b>	<b>3475</b>
		1.500 (38.1)	<b>2034</b>	<b>3476</b>
2.000 (50.8)	<b>2035</b>	<b>3477</b>		
.196 (5.0) For #10	.312 (7.9)	.250 (6.4)	<b>1662</b>	<b>4261</b>
		.375 (9.5)	<b>1663</b>	<b>4262</b>
		.500 (12.7)	<b>1664</b>	<b>4263</b>
		.625 (15.9)	<b>1665</b>	<b>4264</b>
		.750 (19.1)	<b>1666</b>	<b>4265</b>
		.875 (22.2)	<b>1667</b>	<b>4266</b>
		1.000 (25.4)	<b>1668</b>	<b>4267</b>
		1.500 (38.1)	<b>1669</b>	<b>4268</b>
		2.000 (50.8)	<b>1672</b>	<b>4269</b>

### MATERIAL:

**Brass:** ASTM-B16, Nickel Plate (QQ-N-290)  
**Aluminum:** ASTM B211, Clear Iridite (MIL-C-5541)  
**Nylon:** Nylon 6/6, UL Rated 94V-2  
**Phenolic:** PBE Grade Natural Color Phenolic



NYLON CAT. NO.	PHENOLIC CAT. NO.	L LENGTH	O.D.	CLEAR HOLE
<b>875</b>	—	.125 (3.2)	.250 (6.4)	.120 (3.0) For #4
<b>876</b>	<b>360</b>	.250 (6.4)		
<b>877</b>	<b>361</b>	.375 (9.5)		
<b>878</b>	<b>362</b>	.500 (12.7)		
<b>879</b>	—	.625 (15.9)		
<b>880</b>	<b>363</b>	.750 (19.1)		
<b>881</b>	—	.875 (22.2)		
<b>882</b>	<b>364</b>	1.000 (25.4)		
<b>779</b>	<b>365</b>	1.500 (38.1)		
—	<b>366</b>	2.000 (50.8)		
<b>883</b>	—	.125 (3.2)	.250 (6.4)	.140 (3.5) For #6
<b>884</b>	<b>367</b>	.250 (6.4)		
<b>885</b>	<b>368</b>	.375 (9.5)		
<b>886</b>	<b>369</b>	.500 (12.7)		
<b>887</b>	—	.625 (15.9)		
<b>888</b>	<b>370</b>	.750 (19.1)		
<b>889</b>	—	.875 (22.2)		
<b>890</b>	<b>371</b>	1.000 (25.4)		
<b>789</b>	<b>372</b>	1.500 (38.1)		
—	<b>373</b>	2.000 (50.8)		
<b>891</b>	—	.125 (3.2)	.250 (6.4)	.171 (4.3) For #8
<b>892</b>	<b>1490</b>	.250 (6.4)		
<b>893</b>	<b>1491</b>	.375 (9.5)		
<b>894</b>	<b>1492</b>	.500 (12.7)		
<b>895</b>	—	.625 (15.9)		
<b>896</b>	<b>1493</b>	.750 (19.1)		
<b>897</b>	—	.875 (22.2)		
<b>898</b>	<b>1494</b>	1.000 (25.4)		
<b>799</b>	<b>374</b>	1.500 (38.1)		
—	<b>375</b>	2.000 (50.8)		
<b>790</b>	<b>453</b>	.250 (6.4)	.312 (7.9)	.196 (5.0) For #10
<b>791</b>	<b>454</b>	.375 (9.5)		
<b>792</b>	<b>455</b>	.500 (12.7)		
<b>793</b>	—	.625 (15.9)		
<b>794</b>	<b>456</b>	.750 (19.1)		
<b>795</b>	—	.875 (22.2)		
<b>796</b>	<b>457</b>	1.000 (25.4)		
<b>797</b>	<b>458</b>	1.500 (38.1)		
—	<b>459</b>	2.000 (50.8)		

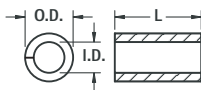
## ALUMINUM ECONOMY SPACERS

- Made of flat strip aluminum and rolled on precision equipment.
- Assures maximum bearing surface, square ends.

**Aluminum:**  
5052-H34 per QQ-A-250/8b



- Tight Joint on Outside Diameter



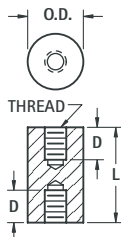
SPACER FOR	I.D.	O.D. REF.
# 4	.120 (3.0)	.167 (4.3)
# 6	.148 (3.8)	.193 (4.9)
# 8	.176 (4.5)	.232 (5.9)

L LENGTH	SCREW CLEARANCE		
	# 4 CAT. NO.	# 6 CAT. NO.	# 8 CAT. NO.
.187 (4.7)	<b>397</b>	—	—
.250 (6.4)	<b>398</b>	<b>405</b>	<b>412</b>
.312 (7.9)	<b>399</b>	<b>406</b>	<b>413</b>
.375 (9.5)	<b>400</b>	<b>407</b>	<b>414</b>
.437 (11.1)	<b>401</b>	<b>408</b>	<b>415</b>
.500 (12.7)	<b>402</b>	<b>409</b>	<b>416</b>
.625 (15.9)	<b>403</b>	<b>410</b>	<b>417</b>

L LENGTH	SCREW CLEARANCE		
	# 4 CAT. NO.	# 6 CAT. NO.	# 8 CAT. NO.
.750 (19.1)	<b>418</b>	<b>425</b>	<b>432</b>
.875 (22.2)	<b>419</b>	<b>426</b>	<b>433</b>
1.000 (25.4)	<b>420</b>	<b>427</b>	<b>434</b>
1.250 (31.8)	<b>421</b>	<b>428</b>	<b>435</b>
1.500 (38.1)	<b>422</b>	<b>429</b>	<b>436</b>
1.750 (44.5)	—	<b>430</b>	<b>437</b>
2.000 (50.8)	—	—	<b>438</b>

## CERAMIC STANDOFFS

- Ideal for very high temperature conditions
- Commercial and military types available
- Military types meet MIL-1-010, NL # clearly marked
- Exceptional strength in compression and tension
- Withstands very high voltage without flashover
- Special sizes available upon request



**MATERIAL:** Grade L5 Ceramic

CAT. NO.	L LENGTH	O.D.	T THREAD	D DEPTH
<b>7710</b>	.250 (6.4)	.250 (6.4)	6-32	THRU
<b>7711</b>	.500 (12.7)	.250 (6.4)	6-32	.156 (4.0)
<b>7712</b>	.375 (9.5)	.375 (9.5)	6-32	.156 (4.0)
<b>7713</b>	.500 (12.7)	.375 (9.5)	6-32	.156 (4.0)
<b>7714</b>	.500 (12.7)	.500 (12.7)	6-32	.140 (3.6)
<b>7715</b>	.750 (19.1)	.500 (12.7)	6-32	.250 (6.4)
<b>7716</b>	1.000 (25.4)	.500 (12.7)	6-32	.375 (9.5)
<b>7717</b>	1.500 (38.1)	.500 (12.7)	6-32	.562 (14.3)
<b>7718</b>	2.500 (63.5)	.500 (12.7)	6-32	.500 (12.7)
<b>7719</b>	2.500 (63.5)	.750 (19.1)	1/4 - 20	.750 (19.1)
<b>7720</b>	4.000 (101.6)	.750 (19.1)	1/4 - 20	.750 (19.1)

### MILITARY

CAT. NO.	L LENGTH	O.D.	T THREAD	D DEPTH	NL #
<b>7661</b>	.500 (12.7)	.375 (9.5)	6-32	.156 (4.0)	NL523W01-004
<b>7662</b>	.625 (15.9)	.375 (9.5)	6-32	.250 (6.4)	NL523W01-005
<b>7663</b>	.625 (15.9)	.500 (12.7)	8-32	.187 (4.7)	NL523W02-005
<b>7664</b>	.750 (19.1)	.375 (9.5)	6-32	.250 (6.4)	NL523W01-006
<b>7665</b>	.750 (19.1)	.500 (12.7)	8-32	.250 (6.4)	NL523W02-006
<b>7666</b>	1.000 (25.4)	.375 (9.5)	6-32	.375 (9.5)	NL523W01-008
<b>7667</b>	1.000 (25.4)	.500 (12.7)	8-32	.375 (9.5)	NL523W02-008
<b>7668</b>	1.000 (25.4)	.750 (19.1)	10-32	.375 (9.5)	NL523W03-008
<b>7669</b>	1.250 (31.8)	.375 (9.5)	6-32	.375 (9.5)	NL523W01-010
<b>7670</b>	1.250 (31.8)	.500 (12.7)	8-32	.375 (9.5)	NL523W02-010
<b>7671</b>	1.250 (31.8)	1.000 (25.4)	1/4 - 20	.375 (11.1)	NL523W04-010
<b>7672</b>	1.500 (38.1)	.375 (9.5)	6-32	.375 (9.5)	NL523W01-012
<b>7673</b>	1.500 (38.1)	.500 (12.7)	8-32	.375 (9.5)	NL523W02-012
<b>7674</b>	1.500 (38.1)	.750 (19.1)	10-32	.375 (9.5)	NL523W03-012
<b>7675</b>	1.500 (38.1)	1.000 (25.4)	1/4 - 20	.500 (12.7)	NL523W04-012
<b>7676</b>	2.000 (50.8)	.375 (9.5)	6-32	.375 (9.5)	NL523W01-016
<b>7677</b>	2.000 (50.8)	.500 (12.7)	8-32	.375 (9.5)	NL523W02-016
<b>7678</b>	2.000 (50.8)	.750 (19.1)	10-32	.375 (9.5)	NL523W03-016