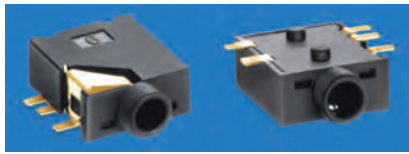


SURFACE MOUNT AUDIO JACKS

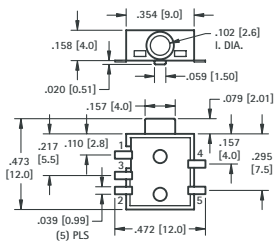
- Mates with 2.5mm and 3.5mm plugs
- Designed for reliable interface with audio equipment including computer speakers, headphones, sound cards, cell phones, etc.
- Models available for mono and stereo applications
- Low profile, surface mount design



SPECIFICATIONS

- Housing:** Polyamide, UL Rated 94V-0
- Ground Terminal:** .012 (.30) thick Brass, Gold Flash ①
- Spring Contacts:** .008 (.20) thick Phosphor Bronze, Gold Flash ② ⑤
- Shunt Terminals:** .012 (.30) thick Brass, Gold flash ③ ④

FOR 2.5 mm PLUGS



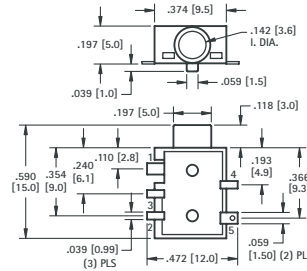
CAT. NO. 980TR (Stereo)

CAT. NO. 982TR (Mono)

Tape Spec's: 24mm wide; 16mm pitch
Reel Spec's: 15 inch reel (1,000 pieces per reel)

SUPPLIED ON TAPE AND REEL

FOR 3.5 mm PLUGS



CAT. NO. 981TR (Stereo)

CAT. NO. 983TR (Mono)

Tape Spec's: 24mm wide; 16mm pitch
Reel Spec's: 15 inch reel (800 pieces per reel)

STEREO SCHEMATIC

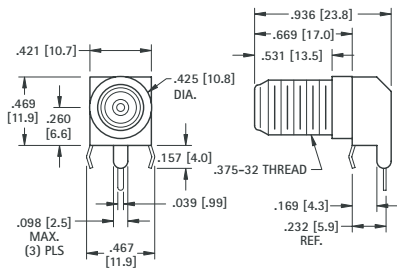


MONO SCHEMATIC

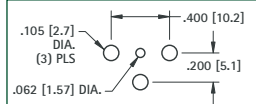
"F" FEMALE CONNECTOR

SNAP-FIT PC MOUNT

- Low profile
- Snap-fit mounting for positive retention during wave soldering
- Rugged, stable construction facilitates reliable mating
- High reliability, manufactured using Nickel Plated Brass bodies and Tin Plated Phosphor Bronze contacts
- Supplied with washer and nut



Mounting Detail

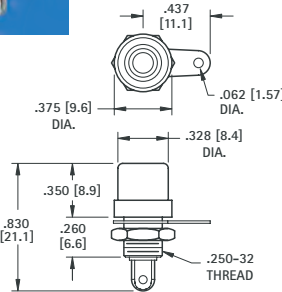


CAT. NO. 911

PANEL MOUNT PHONO JACKS

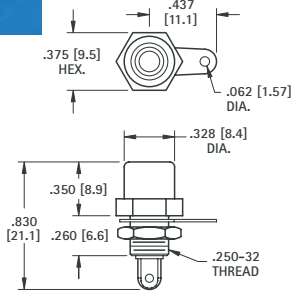
- Mates with .125 (3.12) dia. pin
- Mounts to panel in .296 (7.6) dia. hole
- Color coded for ease of identification
- Complete with nut and solder lug

ROUND BASE



CAT. NO.	INSULATOR COLOR
580	RED
574	BLACK

HEX BASE

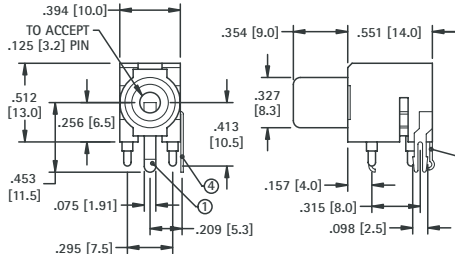


CAT. NO.	INSULATOR COLOR
581	WHITE
582	RED
576	BLACK
583	YELLOW

MATERIAL:
Brass, Nickel Plate

COLOR KEYED - PC PHONO JACKS

- Mates with .125 (3.2) diameter pins
- Features a normally closed circuit
- Various colors for circuit identification
- Snap-fit mounting for positive retention during wave soldering



CAT. NO.	INSULATOR COLOR
970	WHITE
971	RED
972	BLACK
973	YELLOW

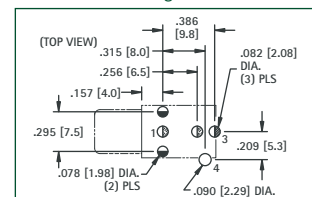
SPECIFICATIONS

- Housing:** PBT
- Ground Terminal:** .020 (.51) thick Brass, Nickel Plate ①
- Spring Contact:** .012 (.30) thick Phosphor Bronze, Silver Plate ③
- Shunt Terminal:** .016 (.41) thick Brass, Silver Plate ④

SCHEMATIC



Mounting Detail

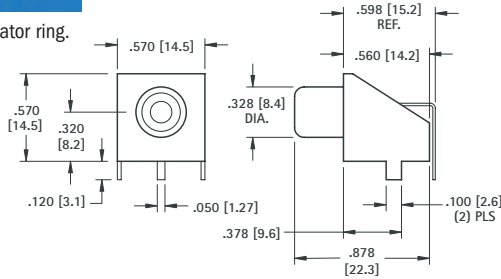


90° PC PHONO JACK

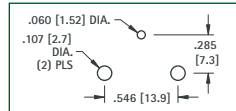


Complete one piece jack for insertion into PC board.
Time Saving. No Wiring Required.

- Black insulator ring.



Mounting Detail



MATERIAL:

Base: Steel, Tin Plate
Shell: Steel, Nickel Plate
Contact: Brass, Tin Plate

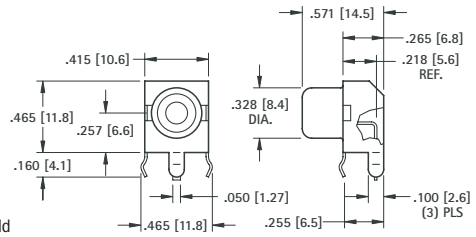
CAT. NO. 902

SNAP-FIT 90° PC PHONO JACKS

CHOICE OF TIN OR GOLD PLATE



Complete one piece jack for insertion into PC board.
Time Saving. No Wiring Required.
Snap-fits into PC board.

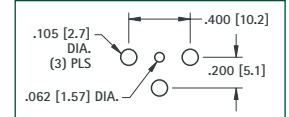


MATERIAL:

Shell: Steel
Contact: Brass
Plating: Tin or Gold

TIN PLATE CAT. NO.	INSULATOR COLOR	GOLD PLATE CAT. NO.
587	WHITE	936
588	RED	937
901	BLACK	900
589	YELLOW	938

Mounting Detail

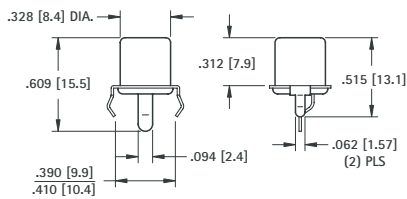


SNAP-FIT VERTICAL PC JACK

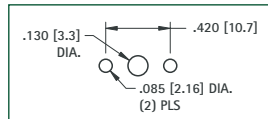
- Snaps into holes on PC board and firmly held for soldering
- No staking required



- Red insulator ring



Mounting Detail



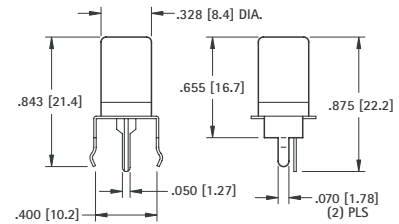
MATERIAL:

Shell: Steel, Tin Plate
Contact: Brass, Tin Plate

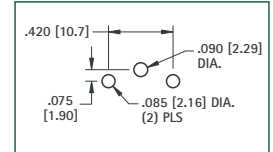
CAT. NO. 572

SNAP-FIT VERTICAL PC PHONO JACKS

- Extra long, one piece shell to accept plugs with longer pins for greater contact
- Snaps into holes on PC board and firmly held for soldering
- No staking required



Mounting Detail



CAT. NO.	INSULATOR COLOR
584	WHITE
577	RED
585	BLACK
586	YELLOW

MATERIAL:

Shell: Steel, Nickel Plate
Contact: Brass, Tin Plate

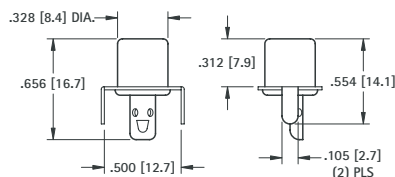
PC PHONO JACKS

VERTICAL

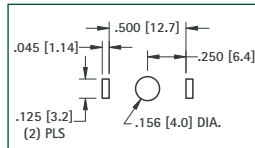
- For applications requiring staking to product



- White insulator ring



Mounting Detail



MATERIAL:

Shell: Steel, Tin Plate
Contact: Brass, Tin Plate

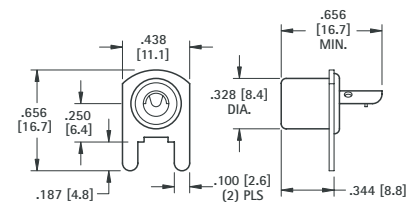
CAT. NO. 573

HORIZONTAL

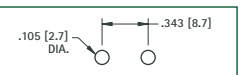
- Mounted on bracket ready for insertion into pre-drilled holes
- Solder lug allows remote attachment of signal to PC board



- Red insulator ring



Mounting Detail



MATERIAL:

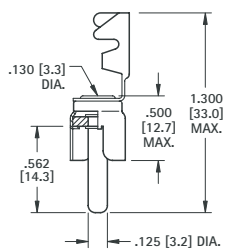
Shell: Steel, Tin Plate
Contact: Brass, Tin Plate

CAT. NO. 571

PHONO PLUGS

• Mates with .125 (3.2) diameter jacks

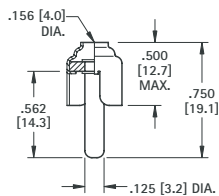
STRAIN RELIEF LUG CRIMPS TO WIRE INSULATION



MATERIAL:
Shell: Steel, Tin Plate
Pin: Brass, Nickel Plate

CAT. NO. 565

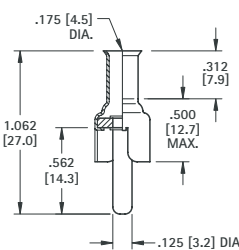
CONVENTIONAL TYPE



MATERIAL:
Shell: Brass, Nickel Plate
Pin: Brass, Nickel Plate

CAT. NO. 561

CRIMP OR SOLDER TYPE EXTRA LONG HANDLE



MATERIAL:
Shell: Steel, Tin Plate
Pin: Brass, Nickel Plate

CAT. NO. 567

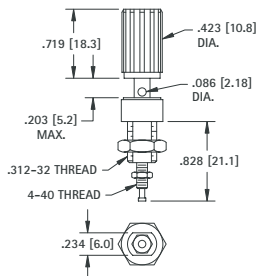
BINDING POSTS

All Keystone binding posts are designed to prevent accidental contact with current carrying parts. They feature a "limited opening" captivated head to insure safety. Ideal for audio circuitry, R.F. circuitry, oscilloscopes, power supplies and various other applications.

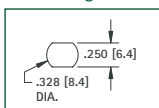
These multi-purpose binding posts feature high current rating, captivated heads and anti-rotation stud mounting.

Note: Binding Posts accept .175" (4.5) Banana Plugs, .080" (2.08) Tip Plugs, Spade Lugs, Alligator Clips, Wires and EZ hooks.

STANDARD BINDING POST



Mounting Detail

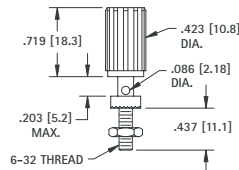


MATERIAL:
Stud: Brass per QQ-B-626
Plating: Silver Plate
Insulation: Nylon
Current Rating: 15 Amps
Stud to Panel Capacitance: 3.3 pF Nominal

For panels up to .281 (7.1) thick

CAT. NO.	COLOR
7004	RED
7005	BLACK

UNINSULATED BINDING POST

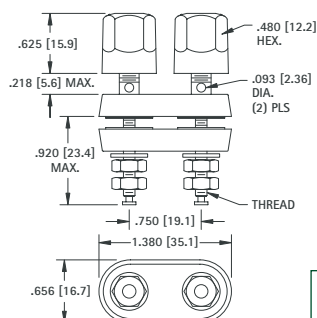


MATERIAL:
Stud: Brass per QQ-B-626
Plating: Nickel Plate
Insulation: Nylon
Current Rating: 15 Amps, 1000V AC Working

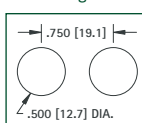
For panels up to .313 (8.0) thick

CAT. NO.	COLOR
7006	RED
7007	BLACK

STANDARD DUAL HEX HEAD



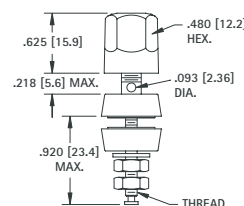
Mounting Detail



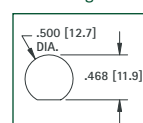
MATERIAL:
Stud: Brass per ASTM B-16.
Insulation: Nylon
Current Rating: 30 Amps, 1000V AC Working

GOLD PLATE		NICKEL PLATE	
CAT. NO.	THREAD	CAT. NO.	THREAD
4108	8-32	7018	8-32
4109	10-32	7019	10-32

STANDARD HEX HEAD



Mounting Detail



MATERIAL:
Stud: Brass per ASTM B-16.
Insulation: Nylon
Current Rating: 30 Amps, 1000V AC Working

GOLD PLATE			NICKEL PLATE		
CAT. NO.	THREAD	COLOR	CAT. NO.	THREAD	COLOR
4096	8-32	RED	4091	8-32	RED
4097	8-32	BLACK	4092	8-32	BLACK
7016	10-32	RED	4093	10-32	RED
7017	10-32	BLACK	4094	10-32	BLACK
7023	10-32	WHITE	4198	10-32	WHITE
7024	10-32	YELLOW	4199	10-32	YELLOW

MARKING
 A
 PHONO PLUGS & BINDING POSTS
 HEAD
 O.D.
 THREAD