



Designers' Choice

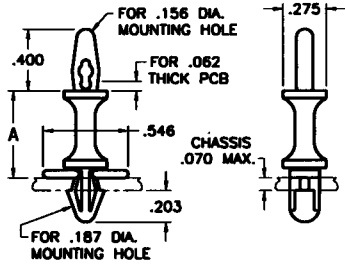
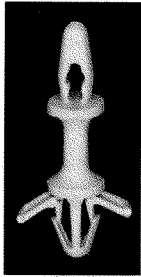
INSULATED PC SPACERS/SUPPORTS

- Easy snap-in assembly
- Designed for .062 thick PC boards and chassis
- Releasable for repairs

- Strong dependable grip
 - No tools required for installation
- MATERIAL:** Nylon, UL Rated 94V-0

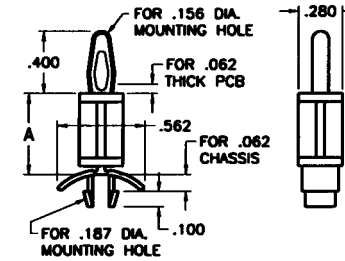
PC TENSION-FIT SUPPORTS

One end locks into chassis, the other end tension-fits into the PC board



CAT. NO.	"A" DIM.
1927A	.250
1928A	.375
1929A	.500
1930A	.625
1931A	.750
1932A	.875
1933A	1.000

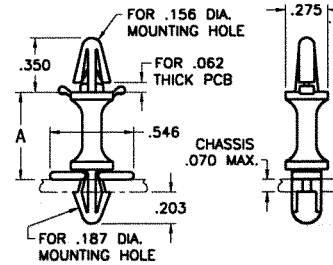
One end locks into chassis, the other end tension-fits into the PC board



CAT. NO.	"A" DIM.
8800	.187
8801	.250
8802	.375
8803	.500
8804	.625
8805	.750
8806	.875

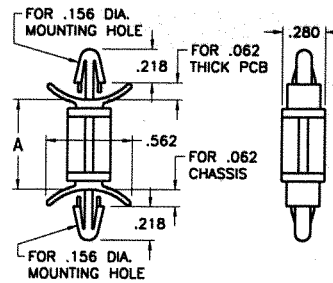
PC LOCK-IN SUPPORTS

One end locks into chassis, the other end locks into the PC board



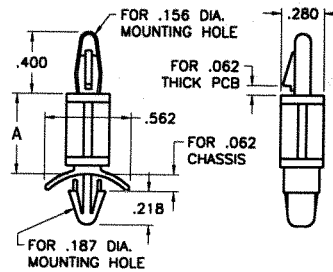
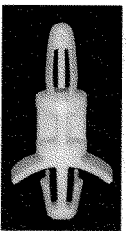
CAT. NO.	"A" DIM.
1927B	.250
1928B	.375
1929B	.500
1930B	.625
1931B	.750
1932B	.875
1933B	1.000

One end locks into chassis, the other end locks into the PC board



CAT. NO.	"A" DIM.
8815	.187
8816	.250
8817	.375
8818	.500
8819	.625
8820	.750
8821	.875

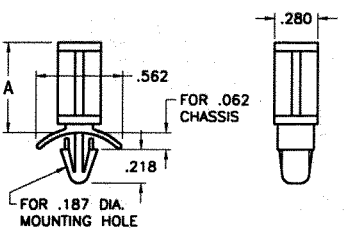
One end locks into chassis, the other end locks into the PC board with easy release lever



CAT. NO.	"A" DIM.
8807	.187
8808	.250
8809	.375
8810	.500
8811	.625
8812	.750
8813	.875
8814	1.000

PC SPACER SUPPORTS

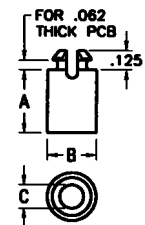
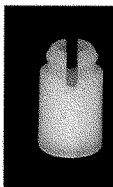
One end locks into chassis, other end supports the PC board



CAT. NO.	"A" DIM.
8822	.187
8823	.250
8824	.375
8825	.500
8826	.625
8827	.750
8828	.875

STACKING SPACERS

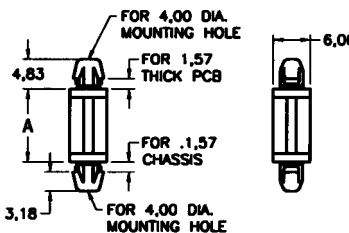
Self-aligning and self retaining. Designed for stacking multiple levels of PC boards. Available for use with #4, #6 & #8 size screws.



CAT. NO.	"A" DIM.	"B" DIM.	"C" DIM.	MTG HOLE	SCREW SIZE
8829	.125	.260	.125	.187	#4
8830	.187	.260	.125	.187	
8831	.250	.260	.125	.187	
8832	.375	.260	.125	.187	
8833	.500	.260	.125	.187	
8834	.625	.260	.125	.187	#6
8835	.250	.312	.153	.234	
8836	.375	.312	.153	.234	
8837	.500	.312	.153	.234	
8838	.625	.312	.153	.234	
8839	.250	.312	.169	.234	#8
8840	.375	.312	.169	.234	
8841	.500	.312	.169	.234	
8842	.625	.312	.169	.234	

METRIC PC LOCK-IN SUPPORTS

One end locks into chassis, the other end locks into the PC board



CAT. NO.	"A" DIM.
8843	3mm
8844	4mm
8845	6mm
8846	8mm
8847	10mm
8848	12mm
8849	14mm
8850	16mm
8851	18mm

MATERIAL: Nylon, UL Rated 94V-2