



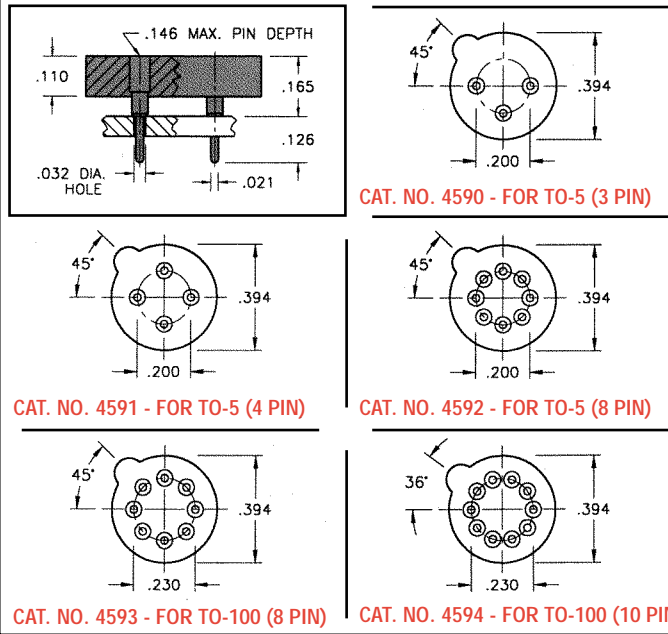
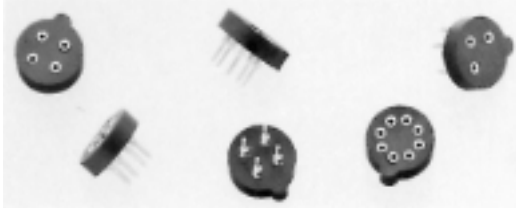
Designers' Choice

# TO-3, TO-5, TO-100 TRANSISTOR SOCKETS

## SOCKETS FOR TO-5 & TO-100

Fully molded compact construction. Speeds transistor assembly. Incorporates ultra high quality, closed entry, sleeve type contacts. Accepts .016 to .020 diameter leads and .010 x .018 rectangular transistor leads.

**MATERIAL:** Insulator: Glass Filled Polyester, UL rated 94V-0; Contact Pin: Brass, Tin Plate; Contact Spring: Beryllium Copper, .000030 min. Gold Plate



## HEAVY DUTY SOCKET FOR TO-3

Features an all-in-one mousing plate and solder tabs, providing complete electrical isolation of the solder tab connections.

**CHOICE OF SINGLE OR DUAL COLLECTOR SOLDER TABS**

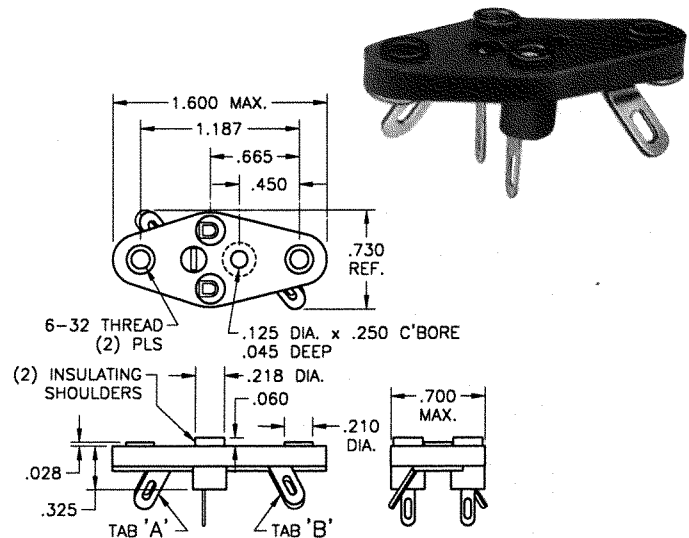
**MATERIAL:** Insulating Base Glass Filled Reinforced Polyester, UL Rated 94V-0

**Contacts:** Phosphor Bronze, Tin Plate

**Mtg. Bracket:** Brass, Tin Plate

**Rated 5 Amps DC continuous and 15 Amps DC Intermittent**

*Choice of Single or Dual Tabs*



**With transistor lead-in insulating shoulders**

CAT. NO.	WITH TAB
4513	"A" ONLY
4514	"A" & "B"

**Less transistor lead-in insulating shoulders**

CAT. NO.	WITH TAB
4515	"A" ONLY
4516	"A" & "B"

## "MINI" HALOGEN LAMP SOCKETS

• Accepts .022 - .032 diameter Pins or Leads • The wire wrap Pins are annealed dead sort and can be easily bent to achieve a variety of positions.



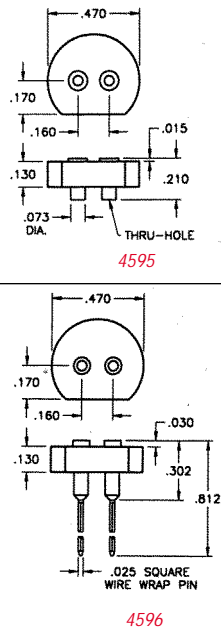
**CAT. NO. 4595**

**SPECIFICATIONS**

**Base:** Glass Filled LCP

**Contact:** Beryllium Copper - Gold Plated

**Shell:** Brass, Nickel Plate

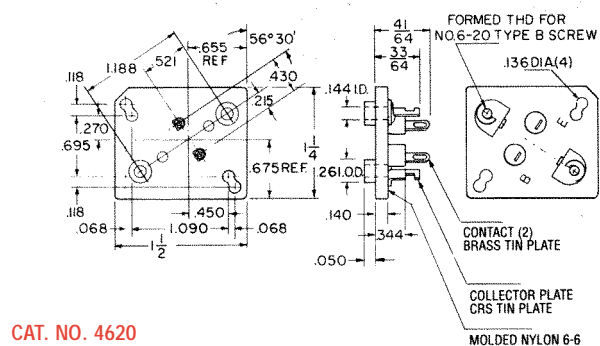
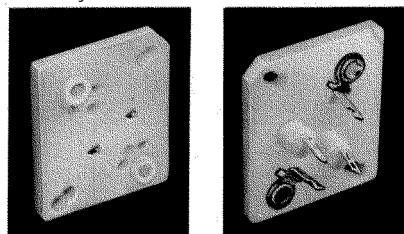


**CAT. NO. 4596** - with .025 SQ. Wire Wrap

## FULLY MOLDED TO-3 SOCKET

Pre-assembling the socket to the chassis by eyelets or rivets permits the installation of the semi conductor at a later stage in the assembly. The molded top boss eliminates hardware.

**MATERIAL:** Molded Nylon 6/6



**CAT. NO. 4620**

# TO-3 POWER TRANSISTOR SOCKETS

Designers' Choice

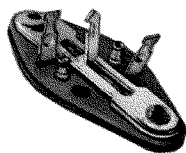
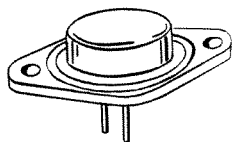


## SOCKETS FOR TO-3 CASE

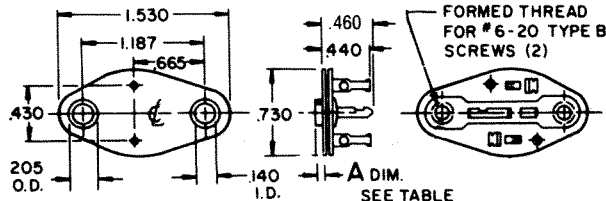
### VARIOUS MOLDED BOSS HEIGHTS

The socket is held underneath the chassis and the semiconductor is inserted into the contacts of the socket holding the assembly in position. To complete the mounting, use 6-20 screws to engage the formed holes in the collector plate.

CAT. NO.	A DIM.
4603	.030
4602	.045
4601	.090



**MATERIAL:**  
Top Plate: Molded Nylon  
Base: Phenolic

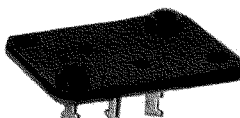
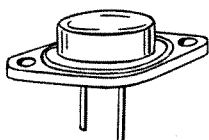


## SOCKETS FOR TO-3 CASE

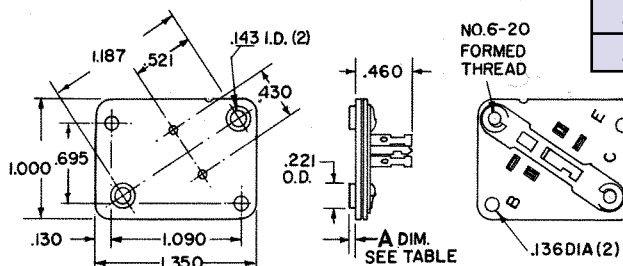
### VARIOUS MOLDED BOSS HEIGHTS

Pre-assembling the socket to the chassis by eyelets or rivets permits the installation of the semiconductor at a later stage in the assembly.

CAT. NO.	A DIM.
4607	.030
4608	.045
4609	.060
4618	.125

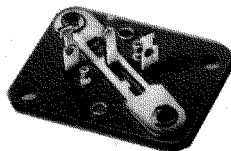
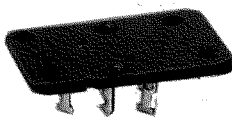
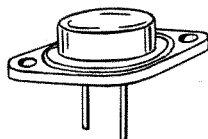


**MATERIAL:**  
Top Plate: Molded Nylon  
Base: Phenolic

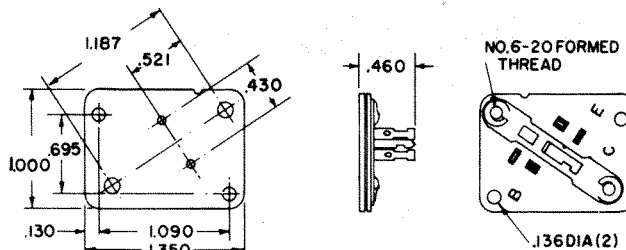


## FOR TO-3 CASE (ALL PHENOLIC SOCKET)

This socket is eyeletted or riveted to the chassis and use external bushings to insulate the screws in the final mounting. The semiconductor may be installed at the last stage of the assembly.



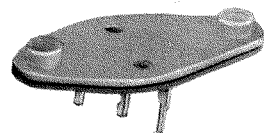
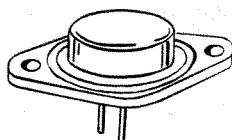
**MATERIAL:**  
Top Plate: Phenolic  
Base: Phenolic



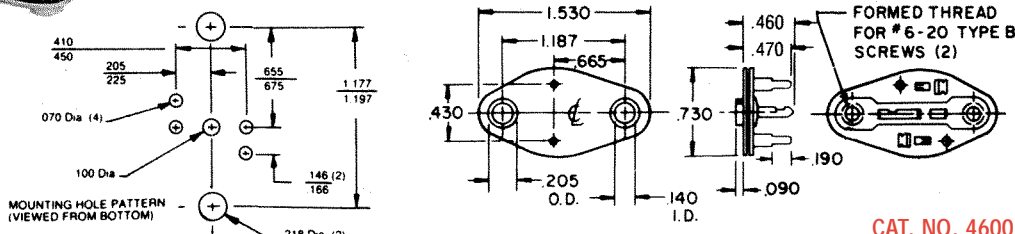
CAT. NO. 4606

## SOCKET FOR TO-3 (PRINTED CIRCUIT)

Easily assembles onto printed circuit board. Eliminates wiring. Stops on P.C. terminals provide sufficient spacing between socket and P.C. board to permit proper assembly of transistor to socket. Can be screwed down tightly to heat sink.



**MATERIAL:**  
Top Plate: Molded Nylon  
Base: Phenolic



CAT. NO. 4600



Designers' Choice

# TRANSISTOR SOCKETS KITS

- LABOR SAVING • EASY MOUNTING TO CHASSIS • BETTER THERMAL EFFICIENCY

An improved, simpler, less costly method of semiconductor mounting. Avoid soldering directly to the semiconductor. Easier to service, economical, more efficient.

**ORDERING INFORMATION:**

**Complete Kits or Individual Hardware**

Purchase the complete kit by catalog number as shown or individual items in minimum 100 piece packages. Keystone does not supply semiconductors.

**SPECIFICATIONS**

**Socket**

Base: Phenolic, XP grade  
 Contacts: Brass, Tin Plate  
 Top Plate: Nylon per ASTM-D4066  
 Collector Plate: .030 Steel, Tin Plate

**Screws**

Steel, Type B, 4-40 or 6-20 as required

**Mica**

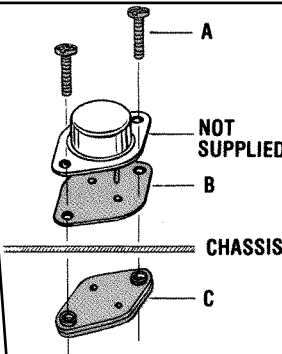
.003 Thick

**SOCKET MOUNTING FOR TO-3 CASE**

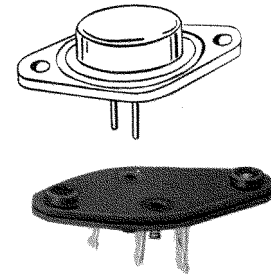
The socket and transistor are assembled without previous attachment to the chassis. Contacts are spaced .430 apart. The .045 high boss on the nylon top eliminates the need of washers or bushings.

ITEM	CAT. NO.	DESCRIPTION	QUANTITY
A	4706	6-20 screws	2
B	4651	Mica Insulator	1
C	4602	Socket	1

**CAT. NO. 4732** Complete Mounting Kit (includes all of the above)



**SOCKET ONLY**



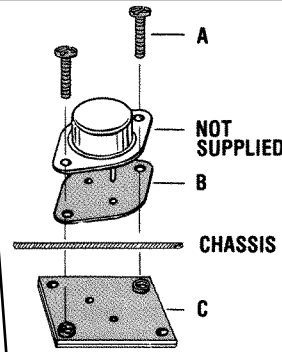
**CAT. NO. 4602**

**SOCKET MOUNTING FOR TO-3 CASE**

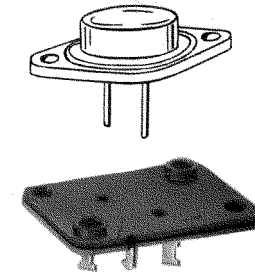
These sockets are pre-assembled to the chassis by either eyelets or rivets. Spacing of contacts is .430 centers. The .045 high boss on the nylon top eliminates the need of washers or bushings.

ITEM	CAT. NO.	DESCRIPTION	QUANTITY
A	4706	6-20 screws	2
B	4651	Mica Insulator	1
C	4608	Square Socket	1

**CAT. NO. 4733** Complete Mounting Kit (includes all of the above)



**SOCKET ONLY**



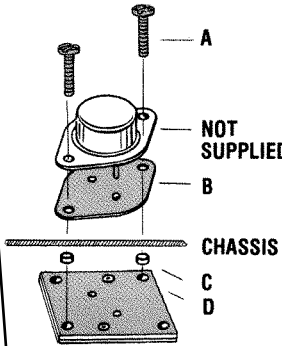
**CAT. NO. 4608**

**SOCKET MOUNTING FOR TO-3 CASE**

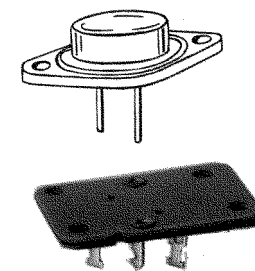
An all phenolic socket that is pre-assembled to the chassis by eyelets or rivets. Spacing and brass contacts .430 centers.

ITEM	CAT. NO.	DESCRIPTION	QUANTITY
A	4706	6-20 screws	2
B	4651	Mica Insulator	1
C	4684	Nylon Bushings	4
D	4606	Sq. Phenol. Socket	1

**CAT. NO. 4734** Complete Mounting Kit (includes all of the above)



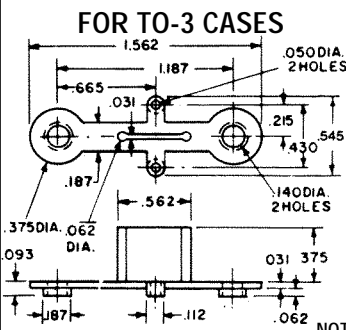
**SOCKET ONLY**



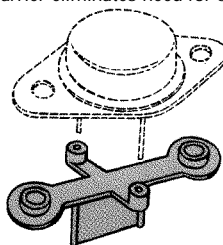
**CAT. NO. 4606**

**NYLON POWER TRANSISTOR MOUNT**

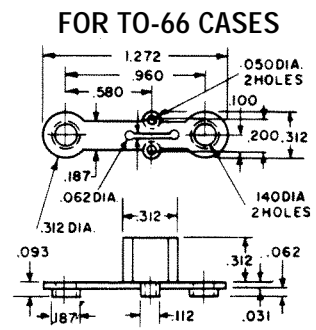
Barrier insulator, molded of type 6/6 natural colored nylon, functionally replaces up to six pieces of conventional insulation required with previous methods of mounting power transistors. Built-in barrier eliminates need for sleeving of connections.



**CAT. NO. 4616**



**CAT. NO. 4617**



NOTE: Heavy Duty Insulator made of celanex available. Samples and quote upon request.

# TRANSISTOR MOUNTING KITS

Designers' Choice



- COMPLETE KITS OR INDIVIDUAL HARDWARE • PRE PACKAGED • UNIFORM HARDWARE AT LOW COST

These pre-packaged universal mounting kits provide all the necessary hardware and insulators required to securely mount the semiconductor to the chassis. Purchase the complete kit consisting of all hardware included in one package.

Your choice of individual items available in 100 piece packages. We welcome suggestions for improving these kits and will render prompt quotations for specially packaged hardware. Keystone does not supply any semiconductors.

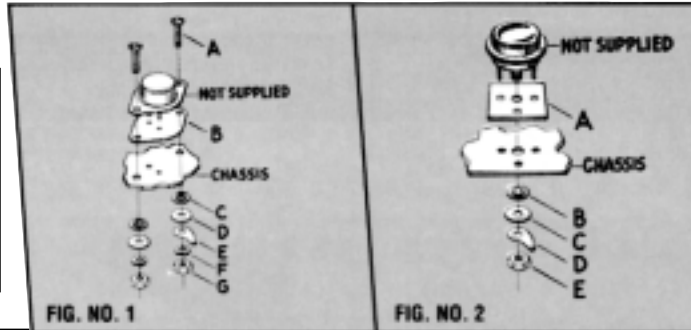
**ORDERING INFORMATION:** Individual parts are sold in not less than 100 pieces of an item. Complete kits are ordered by specifying the complete mounting kit catalog number.

## FOR TO-3 CASE

FIG. 1

Item	Cat. No.	Description	Quan
A	4696	6-32 Screws	2
B	4651	Mica Insulator	1
C	4698	Shoulder Washers	2
D	4699	Metal Washers	2
E	4004	Solder Terminal	1
F	4700	Lockwashers	2
G	4701	6-32 Nuts	2

CAT. NO. 4725 Complete Mounting Kit



## FOR TO-66 CASE

FIG. 1

Item	Cat. No.	Description	Quan
A	4696	6-32 Screws	2
B	4666	Mica Insulator	1
C	4698	Shoulder Washers	2
D	4699	Metal Washers	2
E	4004	Solder Terminal	1
F	4700	Lockwashers	2
G	4701	6-32 Nuts	2

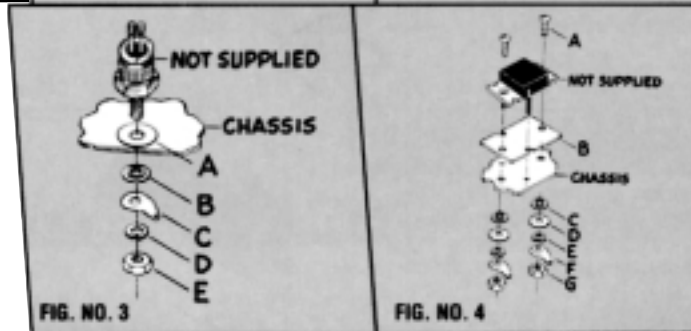
CAT. NO. 4726 Complete Mounting Kit

## FOR TO-36 CASE

FIG. 2

Item	Cat. No.	Description	Quan
A	4656	Mica Insulator	1
B	4702	Shoulder Washer	1
C	4703	Metal Washers	1
D	4704	Solder Terminal	1
E	4705	10-32 Nuts	1

CAT. NO. 4727 Complete Mounting Kit



## FOR PLASTIC CASE

FIG. 4

Item	Cat. No.	Description	Quan
A	4683	4-40 Screws	2
B	4663	Mica Insulator	1
C	343	Shoulder Washers	2
D	4692	Metal Washers	2
E	4693	Lockwashers	2
F	4695	Solder Terminal	2
G	4694	4-40 Nut	2

CAT. NO. 4728 Complete Mounting Kit

## FOR DO-4, TO -59, TO-60, TO-62 CASE

FIG. 3

Item	Cat. No.	Description	Quan
A	4681	Mica Insulator	1
B	4702	Shoulder Washer	1
C	4704	Solder Terminal	1
D	1477	Lockwasher	1
E	4705	10-32 Nuts	1

CAT. NO. 4729 Complete Mounting Kit

## FOR DO-5, TO-48, TO-61 CASE

FIG. 3

Item	Cat. No.	Description	Quan
A	4682	Mica Insulator	1
B	4711	Shoulder Washer	1
C	4712	Solder Terminal	1
D	1476	Lockwasher	1
E	4713	1/4-28 Nuts	1

CAT. NO. 4730 Complete Mounting Kit

## FOR TO-220 CASE

FIG. 4

Item	Cat. No.	Description	Quan
A	4690	4-40 Screws	1
B	4672	Mica Insulator	1
C	3049	Shoulder Washer	1
E	4693	Lockwasher	1
G	4694	4-40 Nuts	1

CAT. NO. 4724 Complete Mounting Kit

## FOR TO-63 CASE

FIG. 3

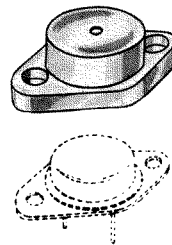
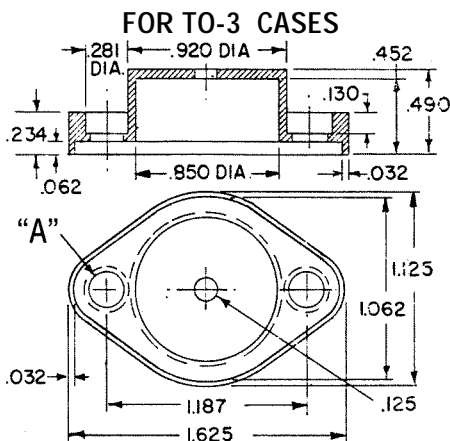
Item	Cat. No.	Description	Quan
A	4683	Mica Insulator	1
B	3241	Shoulder Washer	1
D	1485	Lockwasher	1
E	4716	5/16-24 Nut	1

CAT. NO. 4731 Complete Mounting Kit

## POWER TRANSISTOR COVERS

Molded nylon covers easily mount over and insulate the power transistor. Will withstand temperatures to approx. 300 °F.

Available with or without brass eyelets installed in mounting holes to assure proper electrical contact with collector/case.



CAT. NO.	FOR	EYELETS INSTALLED	I.D. "A"
4632	TO-3	NONE	.210
4634	TO-3	TWO	.140
4633	TO-66	NONE	.155
4635	TO-66	TWO	.130

