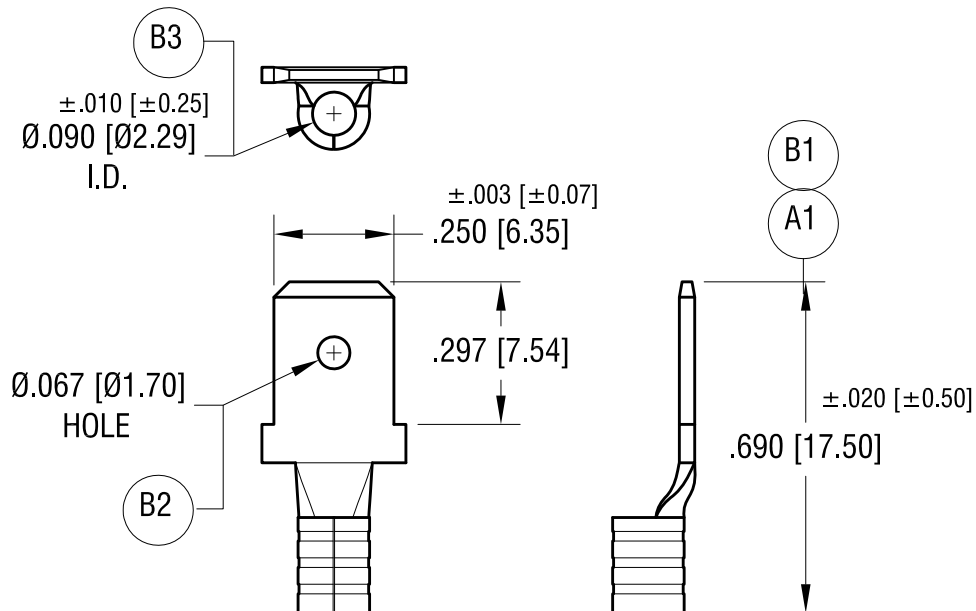


ACTUAL SIZE



NOTE:

1. ACCOMMODATES WIRE RANGE 16/14 AWG

11.17.23	(B1) WAS .750 \pm .015, (B2) WAS DIMPLE (B3) WAS .085 \pm .015 CHANGE AS PER ECN 23-221	B
3.15.23	(A1) WAS .730 \pm .015 CHANGE AS PER ECN 23-039	A
DATE	DESCRIPTION	REV.

KEYSTONE ELECTRONICS CORP.			
www.keyelco.com • NEW HYDE PARK NY 11040 • Tel (516)328-7500			
PART NAME		QUICK-FIT TERMNAL, MALE	
MATERIAL		.032 [0.81] TH'K COPPER	
FINISH		DRN BY	DATE
TIN PLATE		BOONE	11.15.07
TOLERANCES		APP'D	SCALE
DECIMAL $\pm .015$ [± 0.38]		RH	2.5X
ANGULAR $\pm 1^\circ$		DWG NO.	
UNLESS OTHERWISE SPECIFIED		C	8284