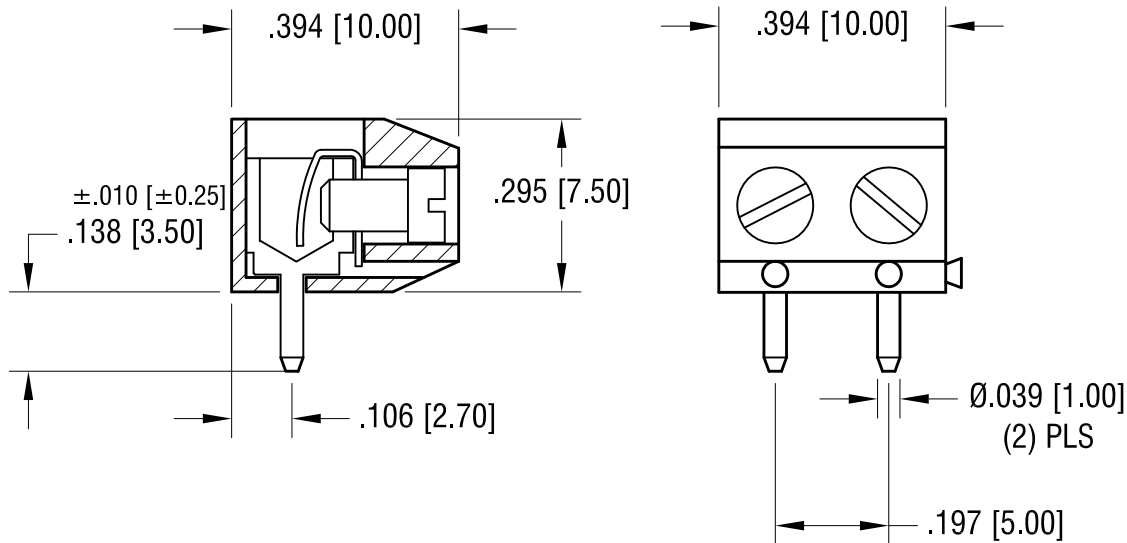
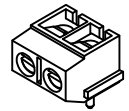


ACTUAL SIZE



NOTES:

1. MAT'L:
HOUSING: PA66, UL 94V-0
CONTACT: BRASS, TIN PLATE
SCREW, CAPTIVATED: STEEL, ZINC PLATE
2. RECOMMENDED MOUNTING HOLE:
.047 [1.19] DIA. (2) PLS

7.26.22	MAT'L WAS PBT CHANGE AS PER ECN 22-130	A
DATE	DESCRIPTION	REV.

KEYSTONE ELECTRONICS CORP.			
www.keyelco.com ● NEW HYDE PARK, NY 11040● Tel (516) 328-7500			
PART NAME			
5mm PC TERMINAL BLOCK			
MATERIAL			
AS NOTED			
FINISH		DRN BY	DATE
AS NOTED		BOONE	1.30.07
		APP'D	SCALE
		RH	3X
TOLERANCES	INCH [MM]	CODE	DWG NO.
DECIMAL	± .005 [± 0.13]	C	8738
ANGULAR	± 1°		
UNLESS OTHERWISE SPECIFIED			