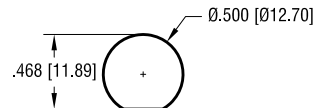
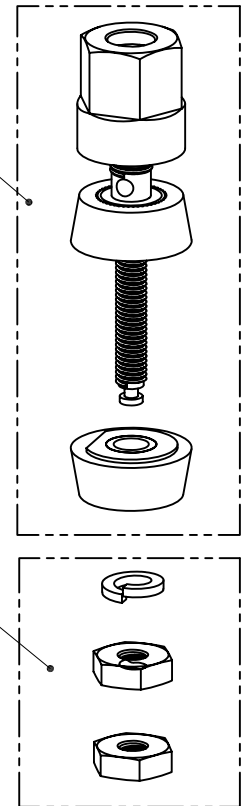


MOUNTING DETAIL



ACTUAL SIZE



SHAFT ASSEMBLY

HARDWARE

P/N	TH'D	COLOR
4091	8-32	RED
4092	8-32	BLACK

NOTE:

1. PART SUPPLIED LOOSE IN BULK
2. SHAFT ASSEMBLY PACKED IN PLASTIC BAG
100 PCS PER BAG
3. HARDWARE PACKED IN PLASTIC BAG
100 PCS PER BAG
4. BAG WITH HARDWARE PACKED INSIDE BAG
WITH SHAFT ASSEMBLY

DESCRIPTION	MAT'L	FINISH
HEAD	NYLON	-
WASHER, INSULATOR	NYLON	-
WASHER, INSERT	BRASS	NICKEL PL.
WASHER, SPLIT	BRASS	NICKEL PL.
NUT	BRASS	NICKEL PL.
SHAFT 8-32 TH'D	BRASS	NICKEL PL.

KEYSTONE ELECTRONICS CORP.

www.keyelco.com • NEW HYDE PARK NY 11040 • Tel (516)328-7500

PART NAME

STANDARD 'HEX' BINDING POST

MATERIAL

AS NOTED

FINISH

AS NOTED

DRN BY

BOONE

DATE

11.17.93

APP'D

RH

SCALE

1.2X

TOLERANCES

INCH

[MM]

DECIMAL

± .005 [± 0.13]

ANGULAR

± 1°

UNLESS OTHERWISE SPECIFIED

CODE

C

DWG NO.

4091-4092

12.19.23	ADD PACKAGING INFORMATION CHANGE AS PER ECN 23-318	C
6.02.08	CHANGE AS PER ECN 08-107	B
2.17.06	CHANGE AS PER ECN 06-013	A
DATE	DESCRIPTION	REV.