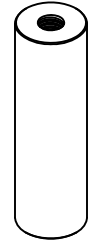
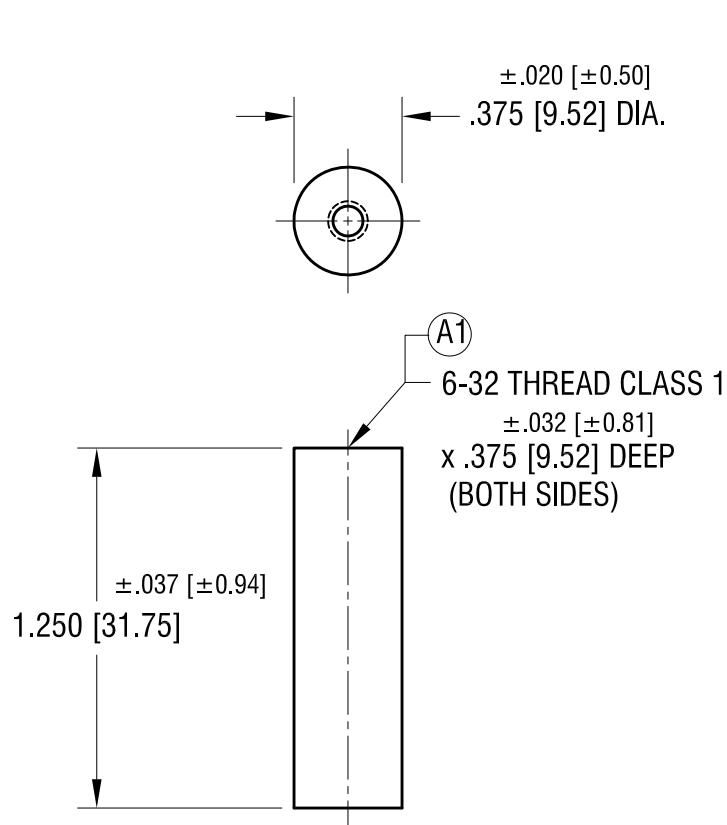


ACTUAL SIZE



NOTE:

1. MARKED WITH NL #: NL523W01-010

3.30.22	(A1) WAS .375±.020 DEEP CHANGE AS PER ECN 22-065	A
DATE	DESCRIPTION	REV.

KEYSTONE ELECTRONICS CORP.			
www.keyelco.com • NEW HYDE PARK NY 11040 • Tel (516)328-7500			
PART NAME		CERAMIC STANDOFF	
MATERIAL		GRADE L5 CERAMIC	
FINISH		DRN BY	DATE
GLAZED		BOONE	2.09.98
TOLERANCES		APP'D	SCALE
DECIMAL ±.005 [±0.13]		RH	1.5X
ANGULAR ± 1°		CODE	DWG NO.
UNLESS OTHERWISE SPECIFIED		C	7669