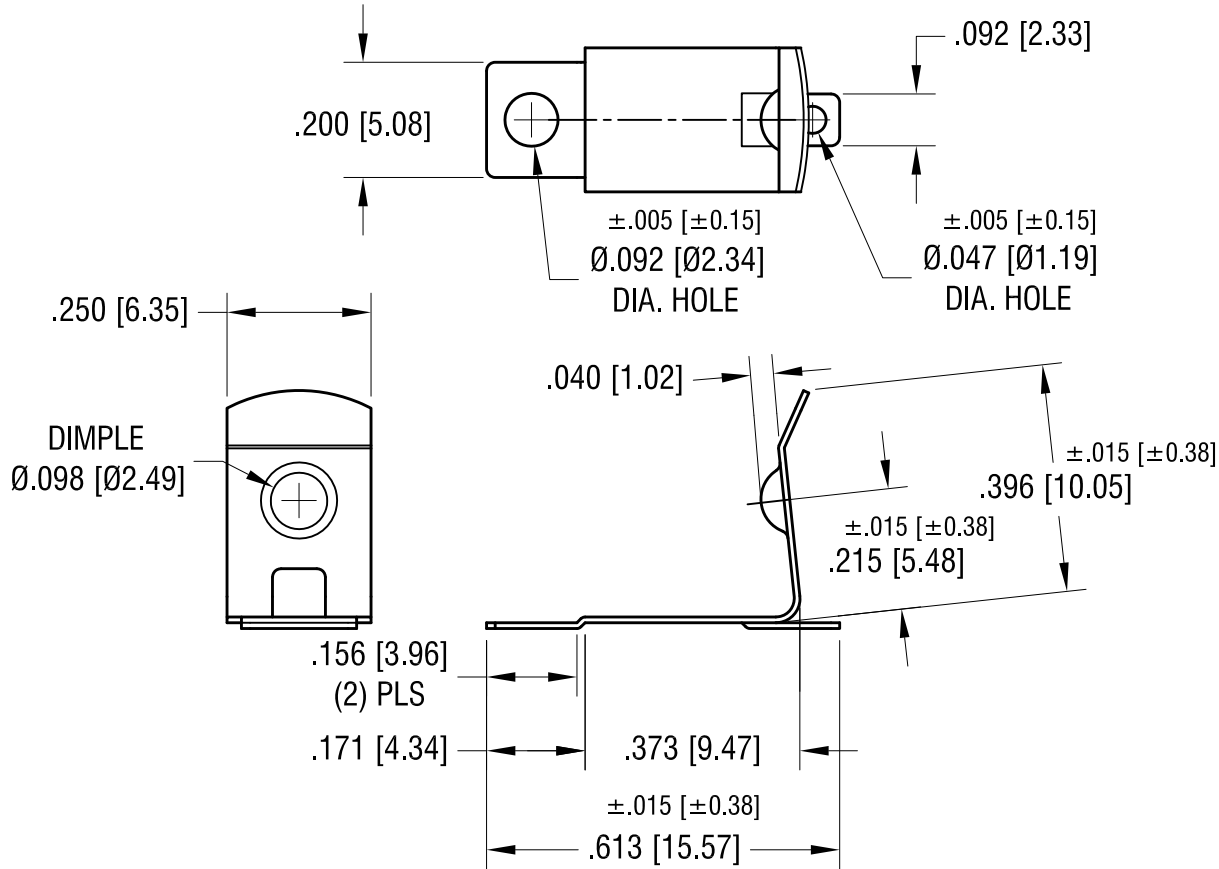
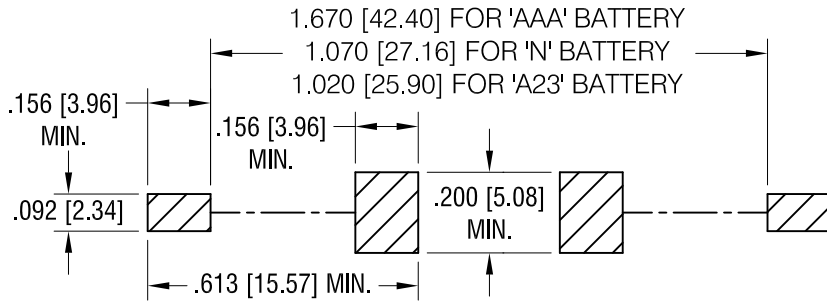
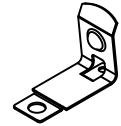


MOUNTING PAD LAYOUT. REQUIRED SPACING FOR 'AAA', 'N', 'A23' BATTERIES

THIS DOCUMENT IS THE PROPERTY OF KEYSTONE ELECTRONICS CORP. AND SHALL NOT BE REPRODUCED, DISTRIBUTED OR USED AS A BASIS FOR MANUFACTURE WITHOUT PRIOR WRITTEN PERMISSION FROM KEYSTONE ELECTRONICS CORP.

ACTUAL SIZE



NOTE:
 1. HEAT TREAT TO SPRING TEMPER.

| | | | | | |
|----------|--|------|---|---------|------------------------|
| 7.15.24 | NO CHANGES TO PART. | D | KEYSTONE ELECTRONICS CORP. www.keyelco.com • NEW HYDE PARK NY 11040 • Tel (516)328-7500 | | |
| 11.01.21 | CHANGE AS PER ECR 21-125 | C | PART NAME 'AAA' SMT BATTERY CLIP | | |
| 5.31.17 | CHANGE AS PER ECR 17-030 | B | MATERIAL .010 [0.25] TH'K ANNEALED SPRING STEEL | | |
| 3.13.14 | 1.67 WAS 1.700 LAYOUT FOR AAA 1.070 WAS 1.100 LAYOUT FOR N CHANGE ASPER ECN 14-028 | A | FINISH TIN NICKEL PLATE | | DRN BY NT DATE 3.30.10 |
| | | | TOLERANCES INCH [MM] DECIMAL ±.010 [±0.25] ANGULAR ± 1° UNLESS OTHERWISE SPECIFIED | | APP'D MR SCALE 3X |
| DATE | DESCRIPTION | REV. | C | DWG NO. | 56 |