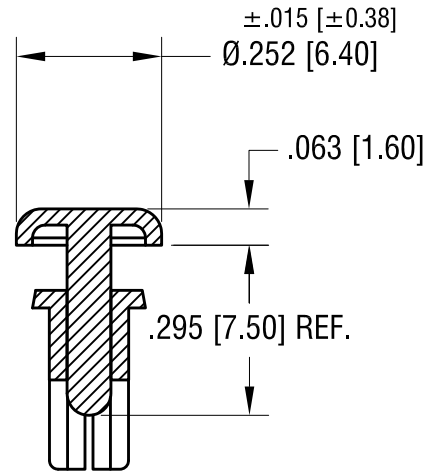
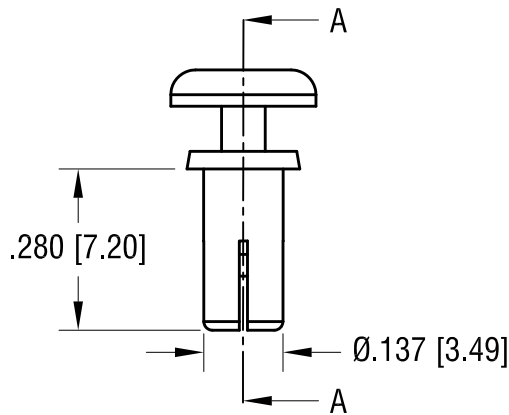
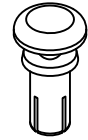
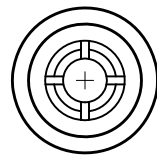


THIS DOCUMENT IS THE PROPERTY OF
KEYSTONE ELECTRONICS CORP. AND
SHALL NOT BE REPRODUCED, DISTRIBUTED
OR USED AS A BASIS FOR MANUFACTURE
WITHOUT PRIOR WRITTEN PERMISSION
FROM KEYSTONE ELECTRONICS CORP.

ACTUAL SIZE



SECTION A-A



NOTES:

1. RECOMMENDED MOUNTING HOLE:
.144 [3.66] DIA.

2. CHASSIS THICKNESS:
.177 [4.50] TO .217 [5.50]

3. MATERIAL: NYLON 6/6 UL 94V-2 (BLACK COLOR)

2.10.26	SLOTS INCREASED FROM 2 TO 4.	B
	A1 WAS .350	
8.27.21	CHANGE AS PER ECN 21-099	A
DATE	DESCRIPTION	REV.

KEYSTONE ELECTRONICS CORP.			
www.keyelco.com • NEW HYDE PARK NY 11040 • Tel (516)328-7500			
PART NAME		SNAP RIVET	
MATERIAL		AS NOTED	
FINISH		DRN BY	DATE
NONE		BOONE	9.29.06
		APP'D	SCALE
		RH	3X
TOLERANCES	INCH [MM]	CODE	DWG NO.
DECIMAL	± .010 [± 0.25]	C	3445
ANGULAR	± 1°		
UNLESS OTHERWISE SPECIFIED			