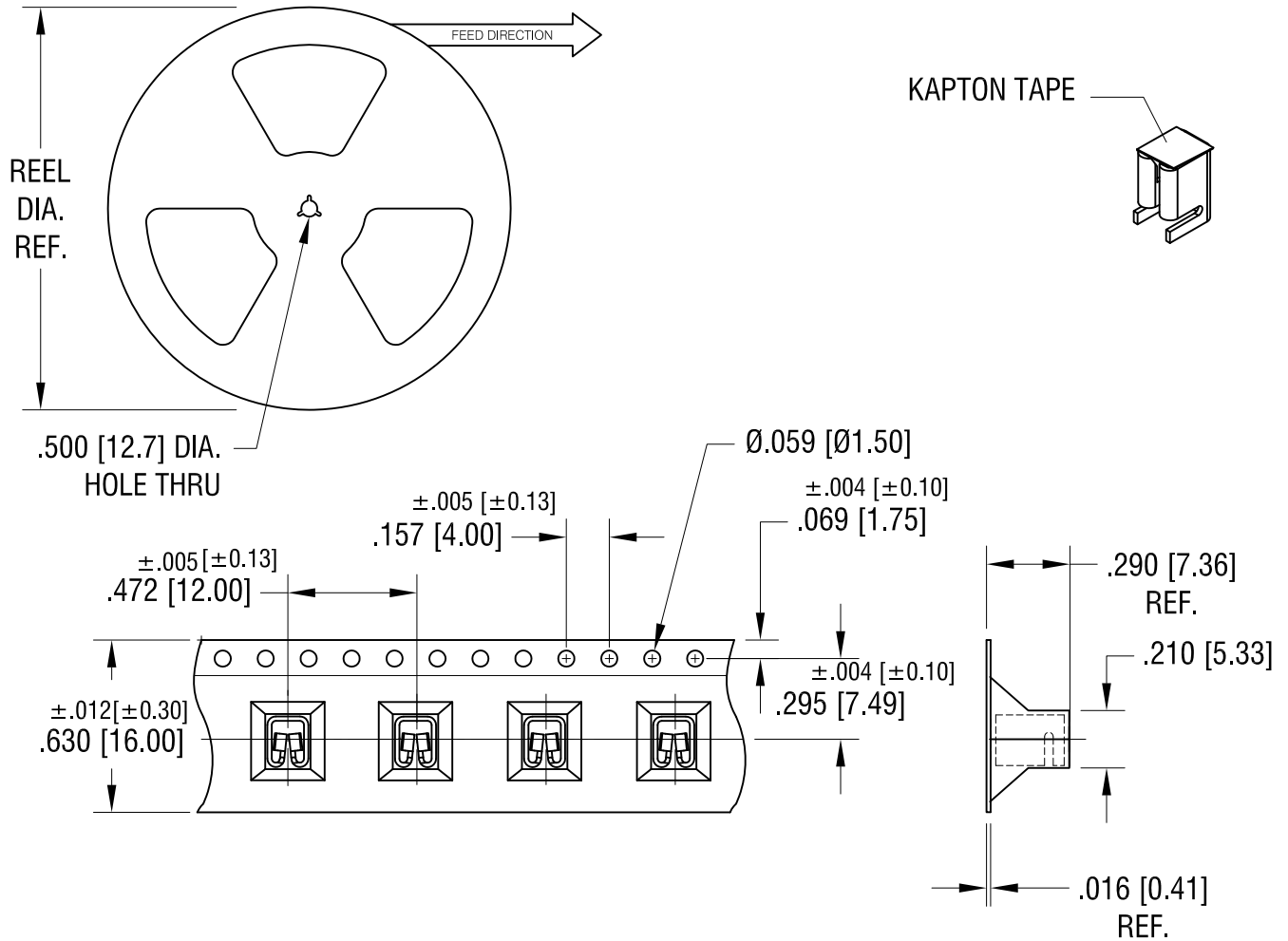


THIS DOCUMENT IS THE PROPERTY OF KEYSTONE ELECTRONICS CORP. AND SHALL NOT BE REPRODUCED, DISTRIBUTED OR USED AS A BASIS FOR MANUFACTURE WITHOUT PRIOR WRITTEN PERMISSION FROM KEYSTONE ELECTRONICS CORP.



**NOTES:**

**TAPE AND REEL SPECIFICATIONS:**

**1. TAPE:**

MAT'L - ALL CONDUCTIVE POLYSTYRENE CARRIER  
ANSI/EIA-481 STANDARD  
.630 [16.0] WIDE; .472 [12.0] PITCH

**2. REEL:**

13.0 [330.2] DIA. 750 PIECES OF  
PART NO. 3584 PER REEL.

**3. KAPTON TAPE TO BE APPLIED TO TOP**

**SURFACE OF EACH RETAINER FOR VACUUM PICK AND PLACE**

**KEYSTONE ELECTRONICS CORP.**

www.keyelco.com • NEW HYDE PARK, NY 11040 • Tel (516) 328-7500

PART NAME

AUTO FUSE, ON TAPE AND REEL

MATERIAL

AS NOTED

FINISH

AS NOTED

DRN BY

NT

DATE

11.20.18

APP'D

LN

SCALE

X

TOLERANCES

INCH [MM]

DECIMAL ± .015 [± 0.38]

ANGULAR ± 1°

UNLESS OTHERWISE SPECIFIED

CODE

C

DWG NO.

**3584KTR**

DATE

DESCRIPTION

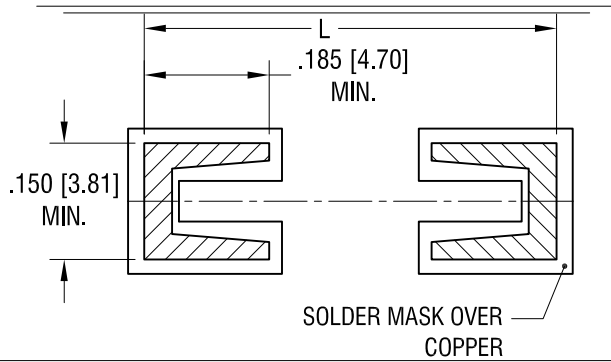
REV.

THIS DOCUMENT IS THE PROPERTY OF  
KEYSTONE ELECTRONICS CORP. AND  
SHALL NOT BE REPRODUCED, DISTRIBUTED  
OR USED AS A BASIS FOR MANUFACTURE  
WITHOUT PRIOR WRITTEN PERMISSION  
FROM KEYSTONE ELECTRONICS CORP.

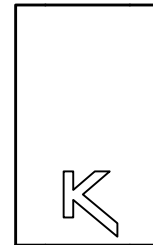
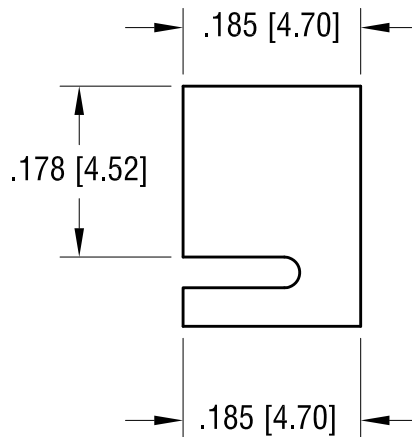
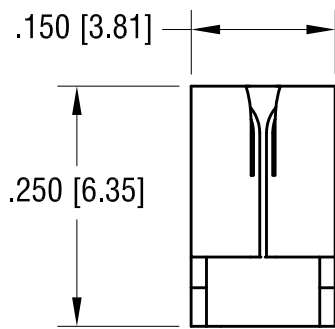
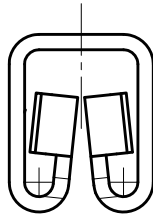
**MOUNTING LAYOUT FOR TWO CLIPS**

L = .580 [14.72] FOR MINI FUSES

L = .768 [19.5] FOR STANDARD AND LOW PROFILE FUSES



ACTUAL SIZE



**KEYSTONE ELECTRONICS CORP.**

www.keyelco.com • NEW HYDE PARK, NY 11040 • Tel (516) 328-7500

PART NAME

AUTO FUSE CLIP

MATERIAL

.016 [0.41] TH'K BRASS

FINISH

MATTE TIN PLATE

DRN BY

NT

DATE

6.06.18

APP'D

LN

SCALE

5X

TOLERANCES

INCH [MM]

DECIMAL ± .005 [± 0.13]

ANGULAR ± 1°  
UNLESS OTHERWISE SPECIFIED

CODE

C

DWG NO.

3584

DATE

DESCRIPTION

REV.