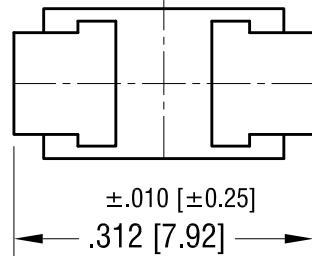
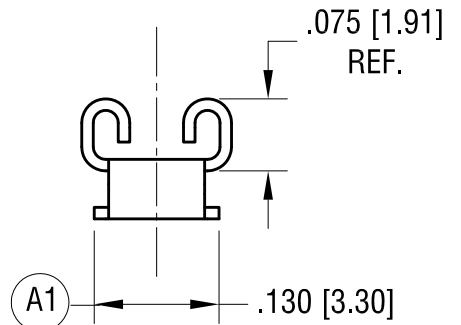
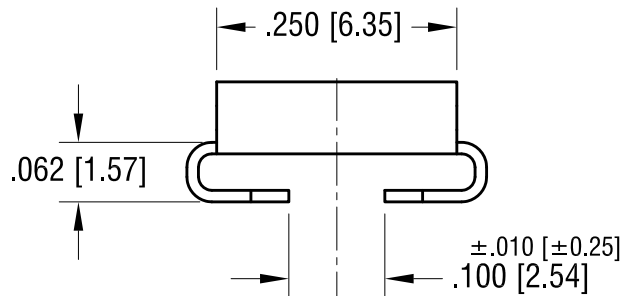
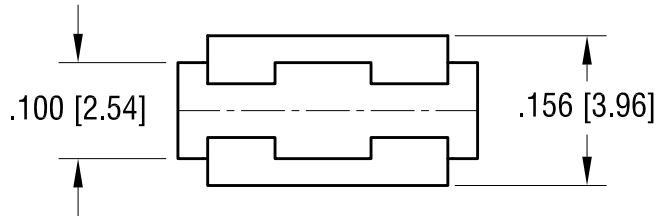
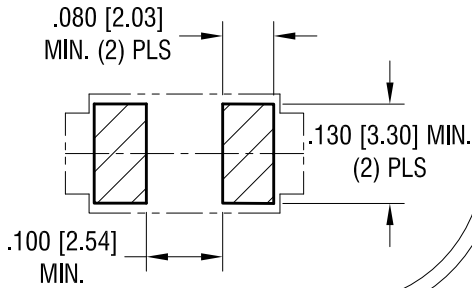


THIS DOCUMENT IS THE PROPERTY OF
KEYSTONE ELECTRONICS CORP. AND
SHALL NOT BE REPRODUCED, DISTRIBUTED
OR USED AS A BASIS FOR MANUFACTURE
WITHOUT PRIOR WRITTEN PERMISSION
FROM KEYSTONE ELECTRONICS CORP.

ACTUAL SIZE



KEYSTONE ELECTRONICS CORP.

www.keyelco.com • NEW HYDE PARK NY 11040 • Tel (516)328-7500

PART NAME
.110 [2.80] x .020 [0.50] QUICK-FIT TERMINAL

MATERIAL
.012 [0.30] TH'K BRASS

FINISH MATTE TIN PLATE	DRN BY NT	DATE 3.07.22
	APP'D RH	SCALE 5X

TOLERANCES DECIMAL ANGULAR	INCH ± .005 [± 0.13]	[MM]	CODE C	DWG NO. 3599
UNLESS OTHERWISE SPECIFIED				

A1 WAS .100

10.24.22 CHANGE AS PER ECN 22-0164

A

DATE DESCRIPTION

REV.