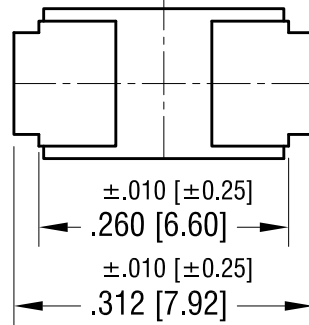
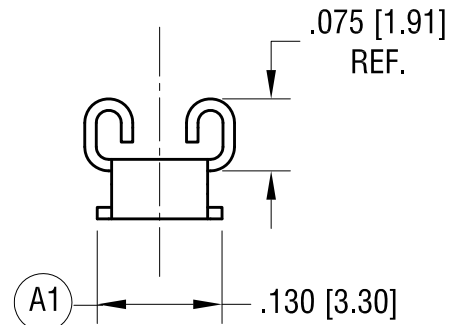
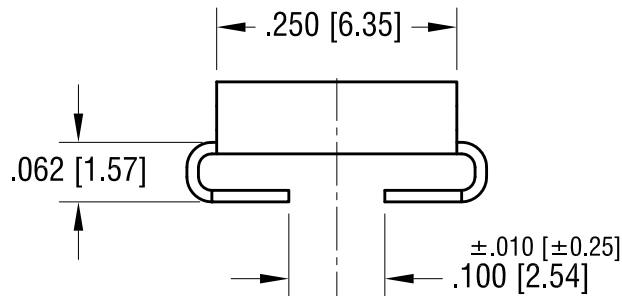
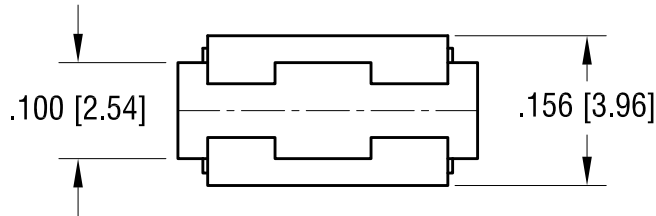
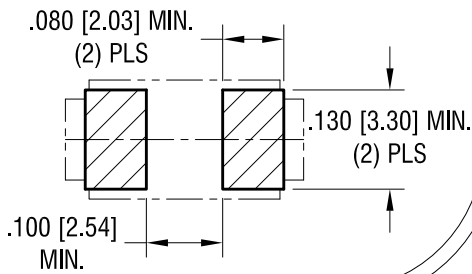




THIS DOCUMENT IS THE PROPERTY OF  
KEYSTONE ELECTRONICS CORP. AND  
SHALL NOT BE REPRODUCED, DISTRIBUTED  
OR USED AS A BASIS FOR MANUFACTURE  
WITHOUT PRIOR WRITTEN PERMISSION  
FROM KEYSTONE ELECTRONICS CORP.

ACTUAL SIZE



**KEYSTONE ELECTRONICS CORP.**

www.keyelco.com • NEW HYDE PARK NY 11040 • Tel (516)328-7500

PART NAME

.110 [2.80] x .020 [0.50] QUICK-FIT TERMINAL

MATERIAL

.012 [0.30] TH'K BRASS

FINISH

MATTE TIN PLATE

DRN BY

NT

DATE

3.07.22

APP'D

RH

SCALE

5X

TOLERANCES

INCH [MM]

DECIMAL ±.005 [±0.13]

ANGULAR ± 1°  
UNLESS OTHERWISE SPECIFIED

CODE

C

DWG NO.

3599

10.24.22 (A1) WAS .100  
CHANGE AS PER ECN 22-0164

A

REV.

DATE

DESCRIPTION