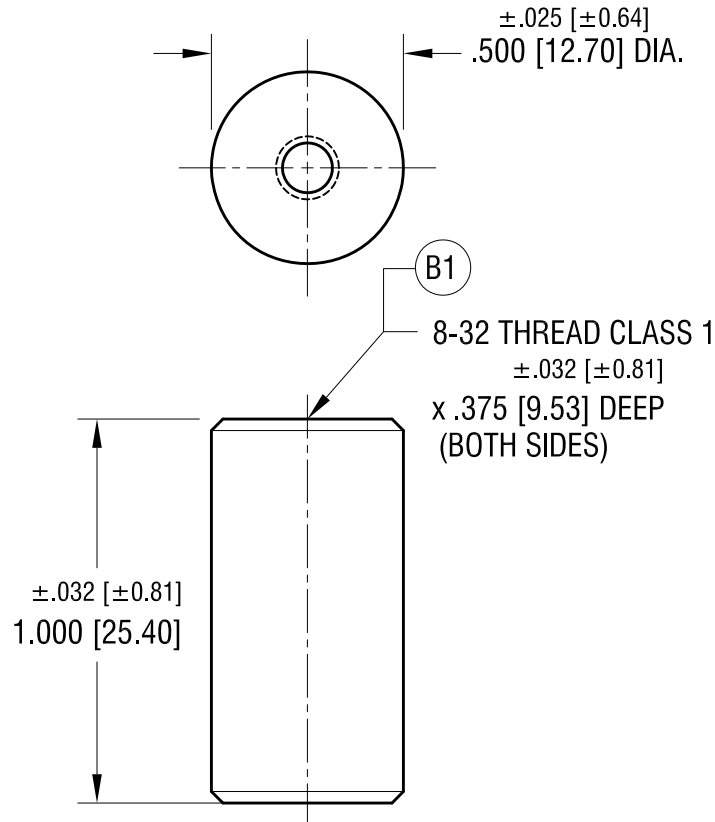
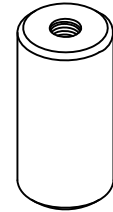


ACTUAL SIZE



NOTE:

1. MARKED WITH NL #: NL523W02-008

3.30.22	B1 WAS .375 \pm .020 DEEP CHANGE AS PER ECN 22-064	B
11.14.11	CHANGE AS PER ECN 11-156	A
DATE	DESCRIPTION	REV.

KEYSTONE ELECTRONICS CORP.			
www.keyelco.com • NEW HYDE PARK NY 11040 • Tel (516)328-7500			
PART NAME			
CERAMIC STANDOFF			
MATERIAL			
GRADE L5 CERAMIC			
FINISH		DRN BY	DATE
GLAZED		BOONE	2.09.98
		APP'D	SCALE
		RH	2 X
TOLERANCES	INCH [MM]	CODE	DWG NO.
DECIMAL	± .005 [± 0.13]	C	7667
ANGULAR	± 1°		
UNLESS OTHERWISE SPECIFIED			