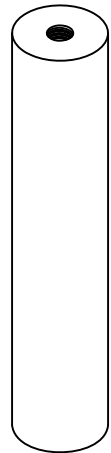
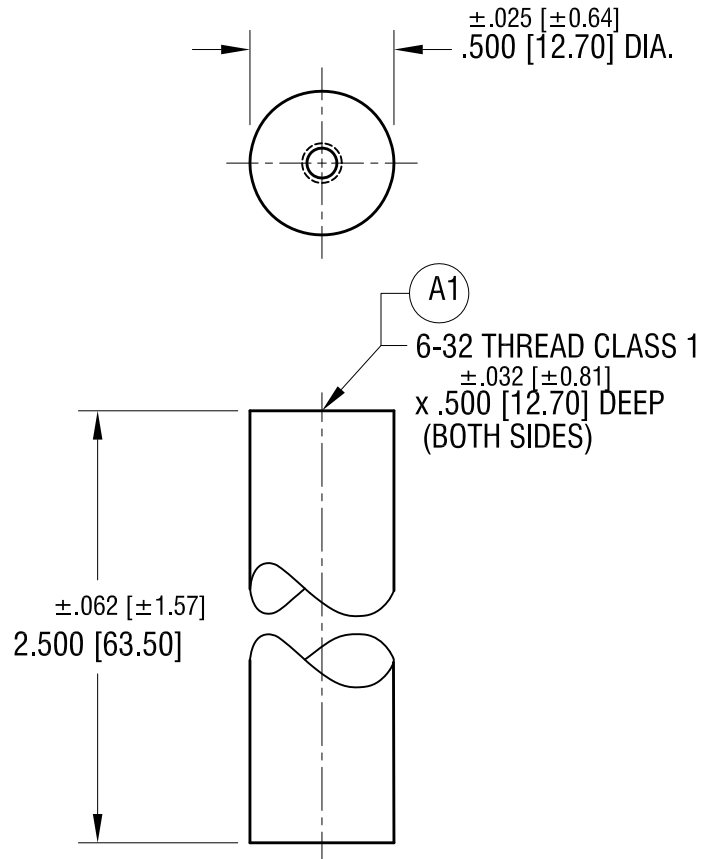


THIS DOCUMENT IS THE PROPERTY OF
KEYSTONE ELECTRONICS CORP. AND
SHALL NOT BE REPRODUCED, DISTRIBUTED
OR USED AS A BASIS FOR MANUFACTURE
WITHOUT PRIOR WRITTEN PERMISSION
FROM KEYSTONE ELECTRONICS CORP.

ACTUAL SIZE



KEYSTONE ELECTRONICS CORP.

www.keyelco.com • NEW HYDE PARK NY 11040 • Tel (516)328-7500

PART NAME				CERAMIC STANDOFF			
MATERIAL				GRADE L5 CERAMIC			
FINISH		DRN BY		DATE		SCALE	
GLAZED		BOONE		11.22.96		1.5X	
		APP'D		RH			
TOLERANCES		INCH		[MM]		CODE	
DECIMAL		± .005		[± 0.13]		C	
ANGULAR		± 1°		UNLESS OTHERWISE SPECIFIED		DWG NO.	
						7718	

3.30.22	A1 WAS .500 ±.025 DEEP CHANGE AS PER ECN 22-062	A
DATE	DESCRIPTION	REV.