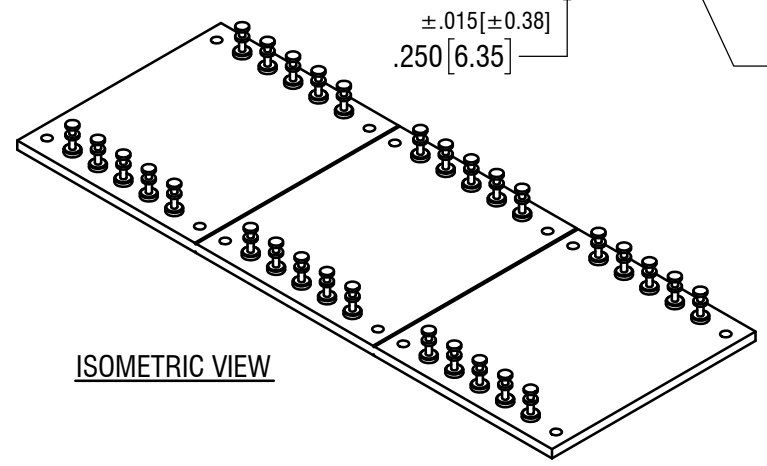
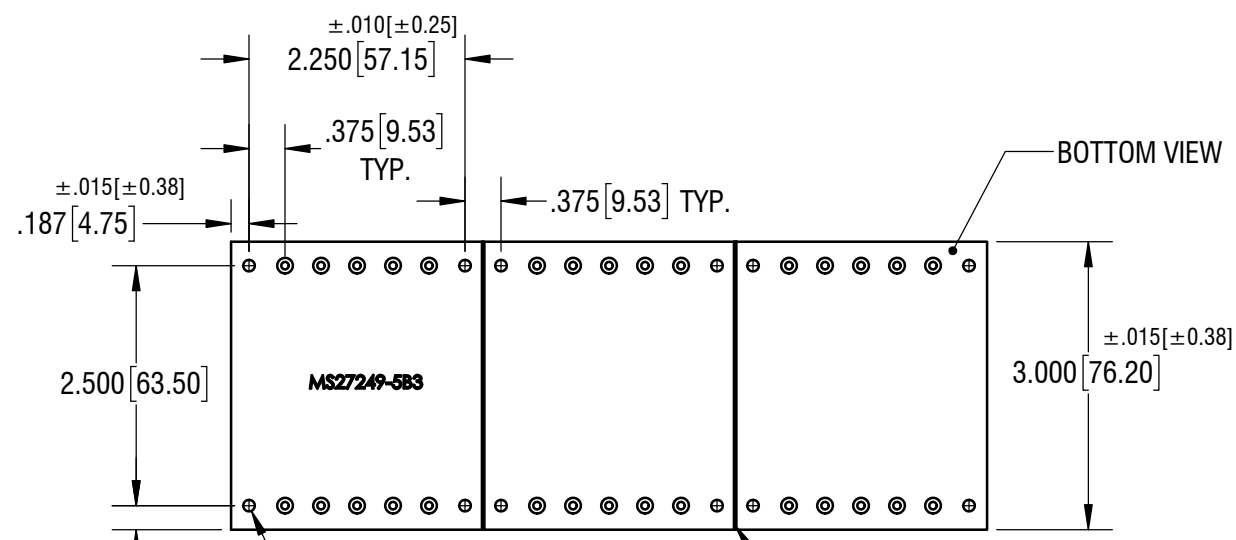
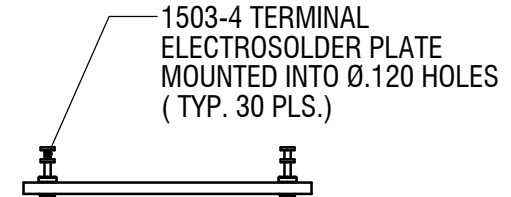
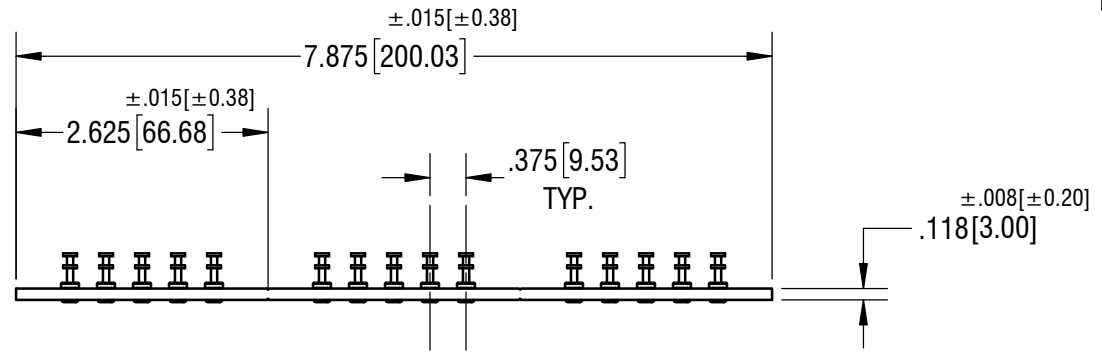


DATE	DESCRIPTION	REV.



NOTE:
 1. STAMP P/N MS27249-5B3 APPROX AS SHOWN.

KEYSTONE ELECTRONICS CORP.			
www.keyeclco.com • NEW HYDE PARK, NY 11040 • Tel (516) 328-7500			
PART NAME		TERMINAL BOARD,(3) SECTION	
MATERIAL		.118 [3.00] TH'K G-11 GLASS EPOXY	
FINISH		DRN BY	DATE
NONE		BOONE	1.26.98
		RH	SCALE 2X
TOLERANCES		INCH	[MM]
DECIMAL		$\pm .005$	$\pm .013$
ANGULAR		$\pm 1^\circ$	
UNLESS OTHERWISE SPECIFIED		CODE	DWG NO.
		C	MS272495B3

THIS DOCUMENT IS THE PROPERTY OF
 KEYSTONE ELECTRONICS CORP. AND
 SHALL NOT BE REPRODUCED, DISTRIBUTED
 OR USED AS A BASIS FOR MANUFACTURE
 WITHOUT PRIOR WRITTEN PERMISSION
 FROM KEYSTONE ELECTRONICS CORP.